

Accounts Receivable and Billing

Data Dictionary

Last update: February 2024

All rights reserved. This document may be reproduced or reprinted, in whole or in part, without permission as long as the above copyright statement and source are clearly acknowledged. This publication or any reproductions may not be sold. Copyrights, trademarks, and service marks referred to in this documentation are the property of their respective owners.

Copyright © 2024
The Regents of The University of Michigan



Information and Technology Services

Comments and Suggestions

Your feedback is very important to us. As a U-M Data Warehouse user, we encourage you to tell us what you like or dislike about this Data Dictionary. Your comments and suggestions will help us improve this and other ITS documentation for you in the future.

Please email your comments and suggestions to 4help@umich.edu. Thank you.

Contents

Accounts Receivable and Billing Tables Diagram	1
Accounts Receivable and Billing Tables Description	7
Accounts Receivable and Billing Data Element Dictionary	9

Account Receivable and Billing Tables Diagram

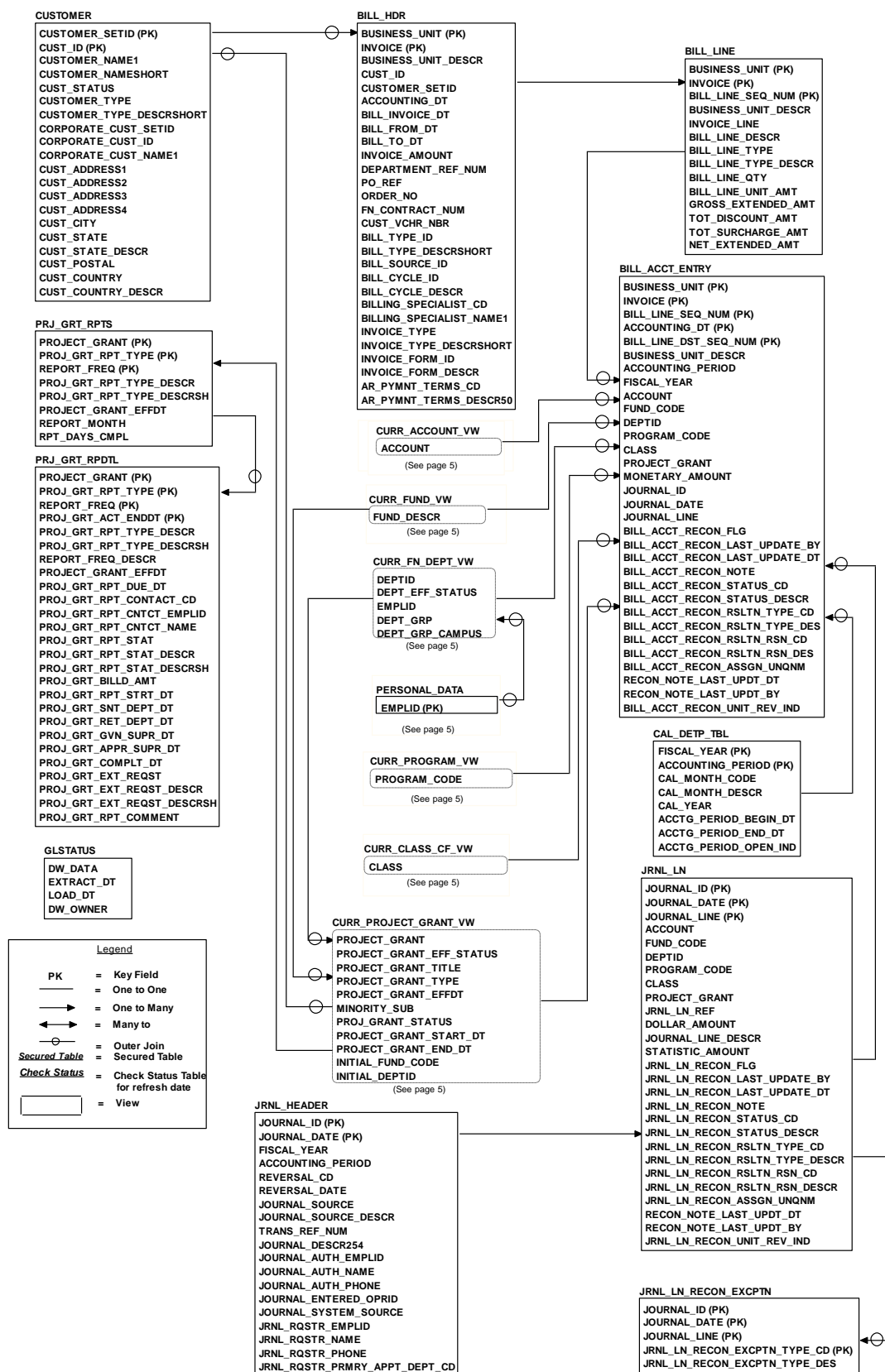
The Accounts Receivable and Billing Tables Diagram illustrates the *logical* relationships among the Accounts Receivable and Billing tables. A logical link (connecting line) between two tables indicates that there is a direct data relationship between the two tables. Physically, any tables with a common element can be joined. However, two tables with common elements may not necessarily have logical links to one another. Joining tables without logical links may produce undesired results; a thorough understanding of the data is needed to guarantee accurate results.

All tables within a data set are not necessarily refreshed on the same schedule. It is ***extremely important*** to query the status table to determine when the data in each table was last refreshed and to determine the impact this will have on query results.

Click for a detailed [description of the joins used between tables.](#)

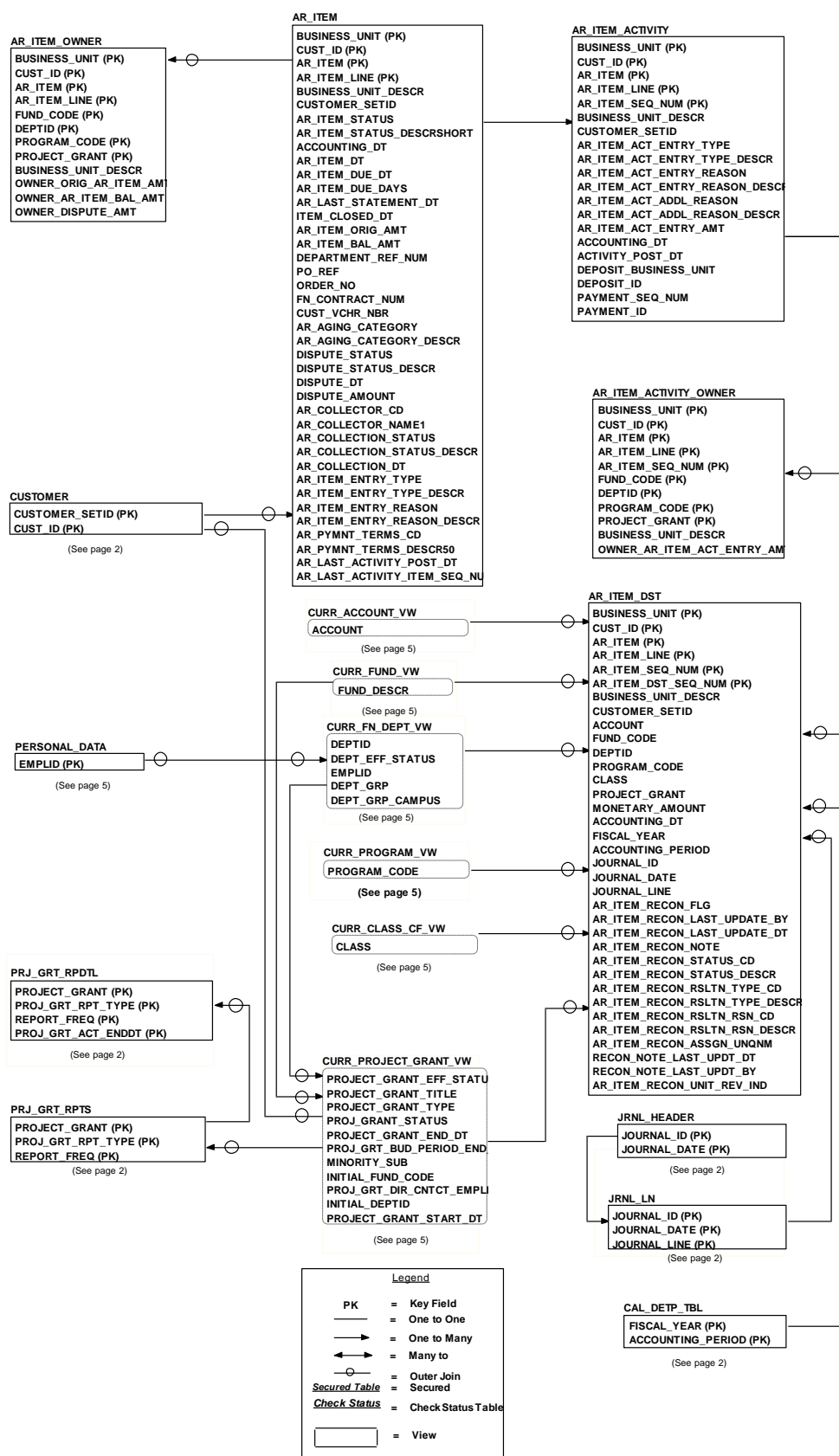
Click for a detailed [description of the joins used between tables.](#)

Invoice

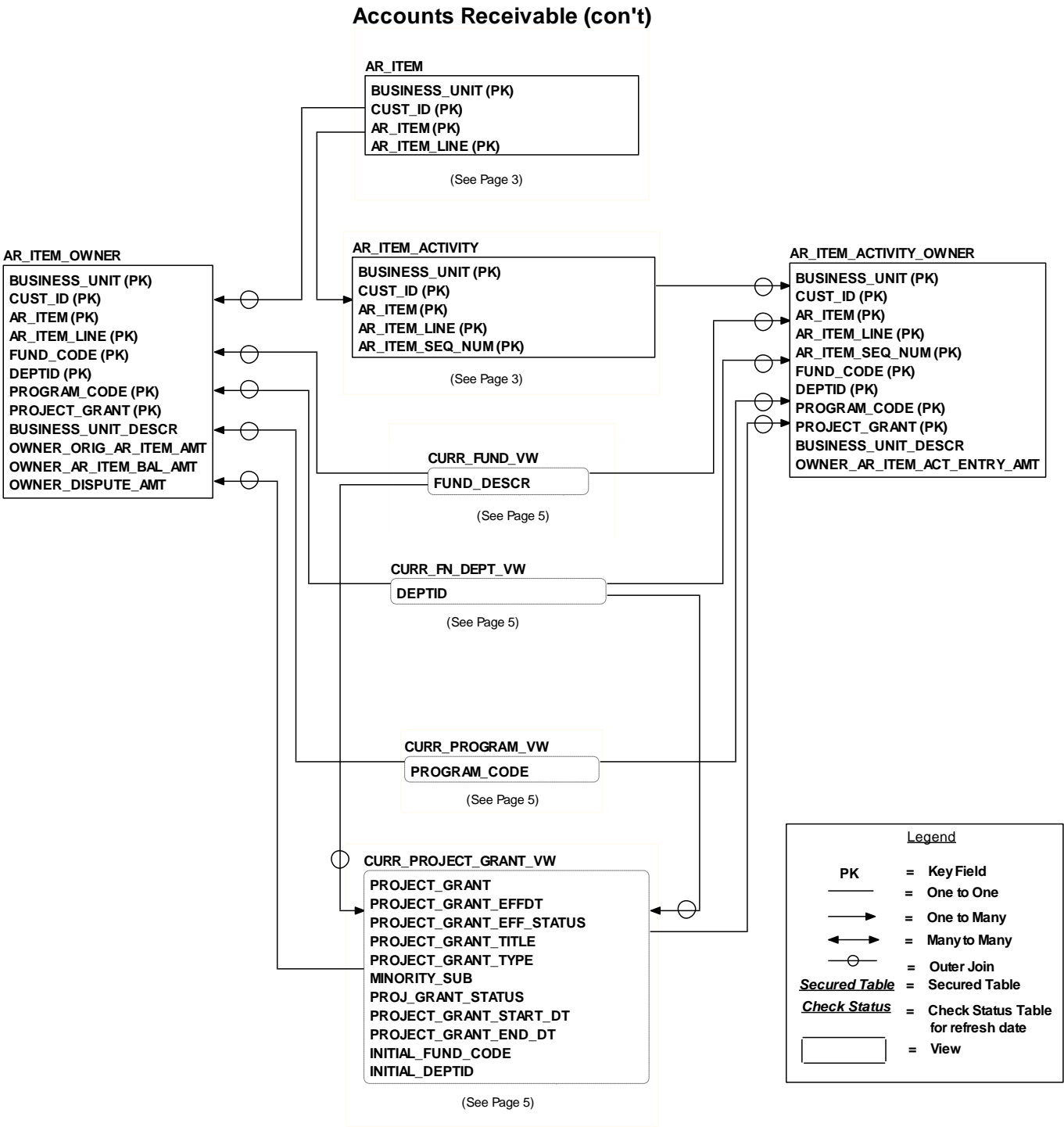


Click for a detailed [description of the joins used between tables.](#)

Accounts Receivable

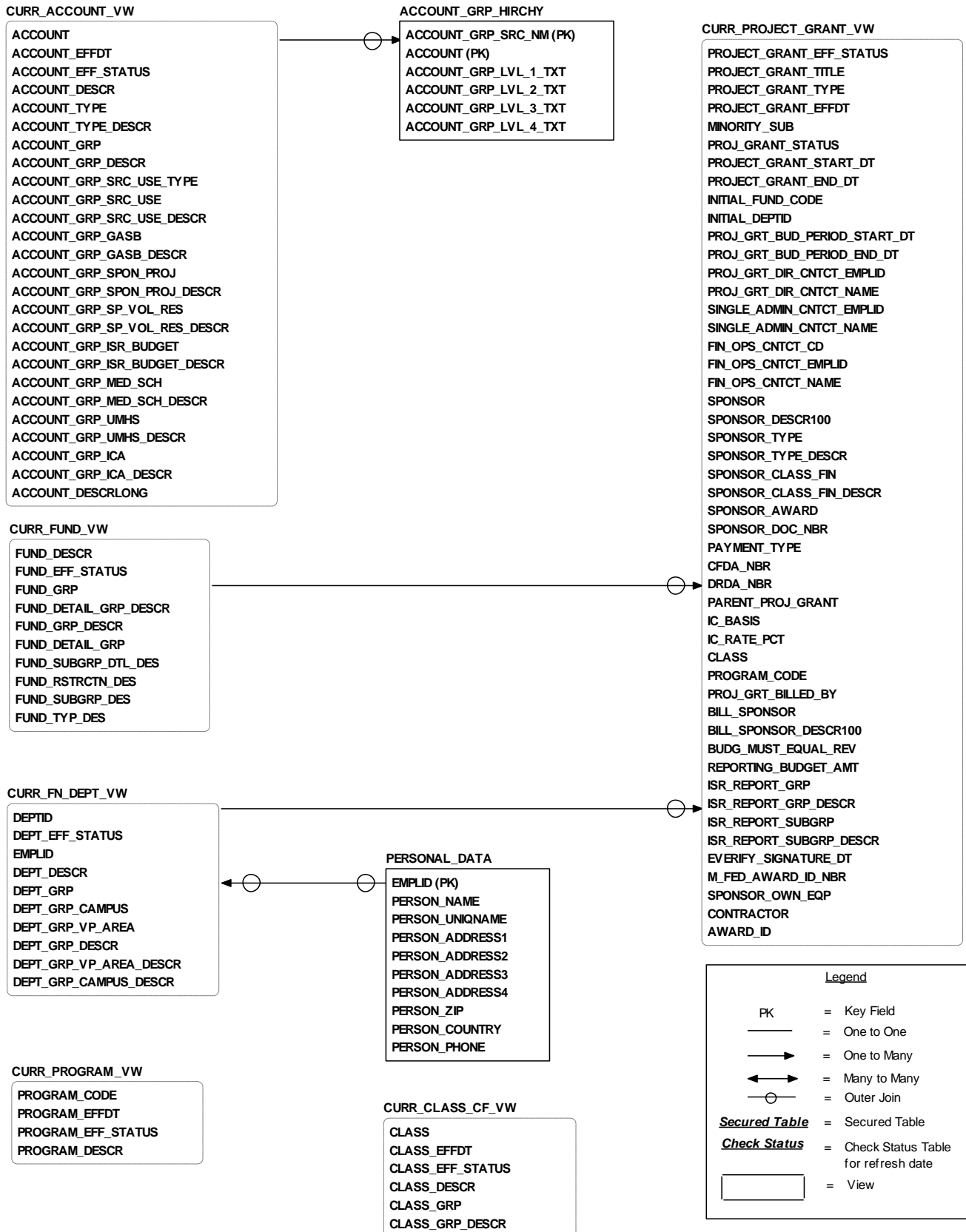


Click for a detailed [description of the joins used between tables.](#)



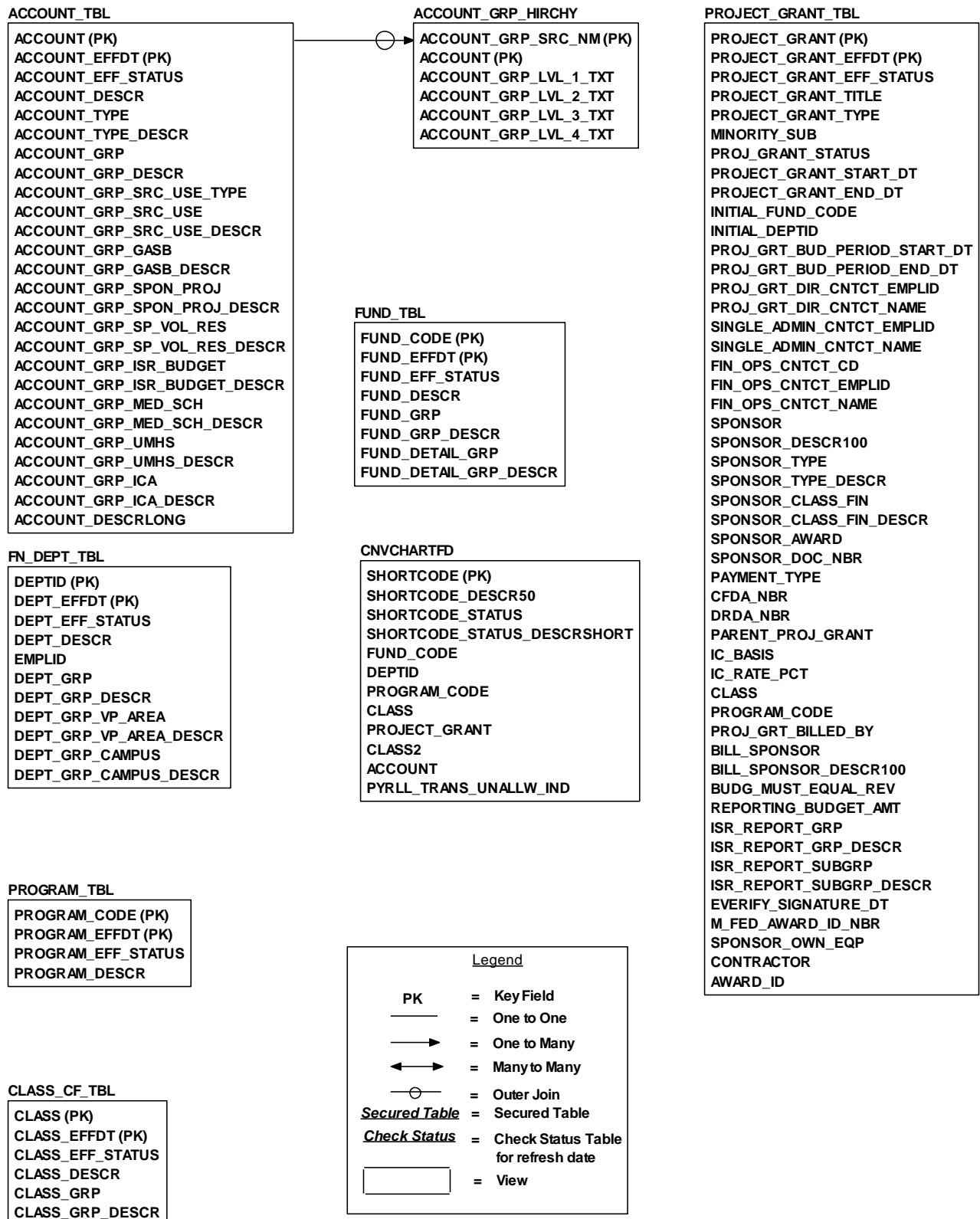
Click for a detailed [description of the joins used between tables.](#)

Chartfield Views



Click for a detailed [description of the joins used between tables.](#)

Historical Chartfields and Conversion Chartfield



Accounts Receivable and Billing Tables Description

The Accounts Receivable and Billing Tables Description provides the following information for each table in the U-M Data Warehouse Accounts Receivable and Billing data set:

<i>Physical Table Name</i>	Name for the table you can use in SQL queries.
<i>Logical Table Name</i>	Descriptive name of the table.
<i>Data Set Locations</i>	The names of the data sets in which the table resides.
<i>Table Description</i>	Description of the table.

The tables are ordered alphabetically by table physical name.

Physical Table Name	Logical Table Name	Data Set Locations	Table Description
ACCOUNT_GRP_HIRCHY	Account Group Hierarchy	M_GLDW1	Account Group Hierarchy contains user defined hierarchies, of up to four levels, to group account codes for reporting purposes.
ACCOUNT_TBL	Account	M_GLDW1	Historical characteristics of accounts, such as account name, type and associated group. Contains all accounts except budget offset accounts.
AR_ITEM	Accounts Receivable Item	M_GLDW1	Information about an accounts receivable item, an item is the receivable in the Accounts Receivable system.
AR_ITEM_ACTIVITY	Accounts Receivable Activity	M_GLDW1	Information about the historical activity of an accounts receivable item.
AR_ITEM_ACTIVITY_OWNER	Accounts Receivable Activity Owner	M_GLDW1	Information about the chartfields and amounts associated with the historical activity of an accounts receivable item. This table is used to report which chartfields are responsible for a specific amount of an activity on the receivable. This responsibility is determined by the item's original chartfield distribution.
AR_ITEM_DST	Accounts Receivable Item Distribution	M_GLDW1	Information about the distribution of an accounts receivable item's activity amount across chartfields. Information in this table is limited to items created directly in Accounts Receivable or items that had select activity in Accounts Receivable.
AR_ITEM_OWNER	Accounts Receivable Item Owner	M_GLDW1	Information about the chartfields and amounts associated with an accounts receivable item. This table is used to report which chartfields are responsible for a specific amount of the receivable. This responsibility is determined by the item's original chartfield distribution.
BILL_ACCT_ENTRY	Bill Account Entry	M_GLDW1	Information about the distribution of an invoice line's amount across chartfields. Information in this table includes the original chartfield distribution of an accounts receivable item that originated in Billing.
BILL_HDR	Bill Header	M_GLDW1	Information about an invoice. An invoice originates in Billing, but is later turned into an accounts receivable item.

Physical Table Name	Logical Table Name	Data Set Locations	Table Description
BILL_LINE	Bill Line	M_GLDW1	Information about the various lines that make up an invoice.
CAL_DETP_TBL	Calendar Detail Period	M_GLDW1	Begin and end calendar dates that define the University's fiscal year and accounting periods.
CLASS_CF_TBL	Class Chartfield	M_GLDW1	Historical characteristics of the chartfield class, such as name and associated groups.
CNVCHARTFD	Convert Account to Chartfields	M_GLDW1	Converts all legacy accounts to chartfields.
CURR_ACCOUNT_VW	Current Account View	M_GLDW1	Current characteristics of accounts, such as account name, type and associated groups.
CURR_CLASS_CF_VW	Current Class Chartfield View	M_GLDW1	Current characteristics of the chartfield class, such as name and associated group.
CURR_FN_DEPT_VW	Current Financial Department View	M_GLDW1	Current characteristics of departments such as department name and associated groups.
CURR_FUND_VW	Current Fund View	M_GLDW1	Current characteristics of fund codes, such as name and associated groups.
CURR_PROGRAM_VW	Current Program View	M_GLDW1	Current characteristics of program codes, such as description.
CURR_PROJECT_GRANT_VW	Current Project/Grant View	M_GLDW1	Current characteristics of project/grants, such as title, amount and type.
CUSTOMER	Customer	M_GLDW1	Information about customers including name and current primary billing address.
FN_DEPT_TBL	Financial Department	M_GLDW1	Historical characteristics of departments such as department name.
FUND_TBL	Fund	M_GLDW1	Historical characteristics of fund codes, such as name and associated groups.
GLSTATUS	General Ledger Status	M_GLDW1	Status of the update schedule for the Accounts Receivable, General Ledger and Procurement tables.
JRNL_HEADER	Journal Header	M_GLDW1	Header data about specific journals.
JRNL_LN	Journal Line	M_GLDW1	Lines or detail lines for journals including chartfields and amounts.
JRNL_LN_RECON_EXCPTN	Journal Line Reconciliation Exception	M_GLDW1	Journal Line Reconciliation Exception contains information about why a transaction could not be systematically auto-reconciled.
PERSONAL_DATA	Personal Data	M_GLDW1	Personal and demographic data about an employee including name and work address.
PRJ_GRT_RPDTL	Project Grant Report Detail Lines	M_GLDW1	Information about various internal and external report and billings detail required for sponsored projects, such as Report Due Date, status and contact information.
PRJ_GRT_RPTS	Project Grant Reports	M_GLDW1	Information about various external reports for sponsored projects.
PROGRAM_TBL	Program	M_GLDW1	Historical characteristics of program codes, such as description.
PROJECT_GRANT_TBL	Project/Grant	M_GLDW1	Historical characteristics of project/grants, such as title, amount and type.

Accounts Receivable and Billing Data Element Dictionary

The Accounts Receivable and Billing Data Element Dictionary contains all the elements found in the U-M Data Warehouse Accounts Receivable and Billing Tables, ordered alphabetically by element name. Here is a description of the information that the dictionary provides for each element:

<i>Physical Element Name</i>	Name for the element you can use in SQL queries.
<i>Logical Element Name</i>	Descriptive name of the element.
<i>Format Type</i>	Type of value of the element (for example: character, number, or date). <i>Note:</i> If the format type for an element is character or date, you must enclose the variable value in single quotes when entering queries.
<i>Format Length</i>	Total length of the element. For data elements in the format “number,number”, the first number represents the total length of the element. The second number represents the number of digits to the right of the decimal.
<i>Data Sets</i>	The names of the data sets that contain the element.
<i>Table Locations</i>	The names of the tables in which the element is located.
<i>Element Definition</i>	Description of the element.
<i>Examples of Valid Values</i>	Either the specific codes that are valid for the element, or samples of the kind of values for the element.

Physical Element Name	Logical Element Name	Format Type	Format Length	Data Set	Table Locations	Element Definition	Examples of Valid Values
ACCOUNT	Account Code	VARCHAR2	6	M_GLDW1	ACCOUNT_GRP_HIRCHY	A code used to record and summarize financial transactions such as assets, liabilities, fund balances, revenues, expenses, statistics or budget accounts. Note: Account in the ITM_CAT_TBL is used as the default account code associated with category codes.	Examples of valid values:122100 = Accounts & Notes Receivable; 615020 = Postage/ Mailing; SHR = Investment Shares
ACCOUNT	Account Code	VARCHAR2	6	M_GLDW1	ACCOUNT_TBL AR_ITEM_DST BILL_ACCT_ENTRY CNVCHARTFD CURR_ACCOUNT_VW JRNL_LN	A code used to record and summarize financial transactions such as assets, liabilities, fund balances, revenues, expenses, statistics or budget accounts.	Examples of valid values:122100 = Accounts & Notes Receivable; 615020 = Postage/ Mailing; SHR = Investment Shares
ACCOUNT_DESCR	Account Name	VARCHAR2	30	M_GLDW1	ACCOUNT_TBL CURR_ACCOUNT_VW	The title assigned to record and summarize financial transactions such as assets, liabilities, fund balances, revenues, expenses, statistics or budget accounts.	Examples of valid values:Accounts & Notes Receivable; Postage/Mailing; Investment Shares
ACCOUNT_DESCRLONG	Account Long Description	VARCHAR2	2000	M_GLDW1	ACCOUNT_TBL CURR_ACCOUNT_VW	A long textual description of the code used to record and summarize financial transactions such as assets, liabilities, fund balances, revenues, expenses, statistics or budget accounts.	Examples of valid values:Accounts & Notes Receivable; For all postage expenses. Used for postage related expenses, including stamps
ACCOUNT_EFF_STATUS	Account Effective Status Code	VARCHAR2	1	M_GLDW1	ACCOUNT_TBL CURR_ACCOUNT_VW	A code specifying the current status of a U of M account.	Examples of valid values:A = Active; I = Inactive
ACCOUNT_EFFDT	Account Effective Date	DATE		M_GLDW1	ACCOUNT_TBL CURR_ACCOUNT_VW	The date on which the account status becomes effective.	Examples of valid values:07/01/2001
ACCOUNT_GRP	Account Group Code	VARCHAR2	20	M_GLDW1	ACCOUNT_TBL CURR_ACCOUNT_VW	A code used to group accounts. Note: sourced from the UM_ACCT_GROUP tree.	Examples of valid values:BANK_CASH; GENERAL_EXPENSES
ACCOUNT_GRP_DESCR	Account Group Description	VARCHAR2	30	M_GLDW1	ACCOUNT_TBL CURR_ACCOUNT_VW	A textual description of the code used to group accounts.	Examples of valid values:Bank Cash; General Expenses
ACCOUNT_GRP_GASB	Account Group Governmental Accounting Standard Board Code	VARCHAR2	20	M_GLDW1	ACCOUNT_TBL CURR_ACCOUNT_VW	A code used to group accounts for U of M to meet financial reporting standards. Note: sourced from the UM_ACCT_GASB tree.	Examples of valid values:SCHOLAR_AND_FELLOWSHIP = Scholarships and Fellowships; ACCOUNTS_PAYABLE = Accounts Payable; OTHER_REV_EXP = Other

Physical Element Name	Logical Element Name	Format Type	Format Length	Data Set	Table Locations	Element Definition	Examples of Valid Values
ACCOUNT_GRP_GASB_DESCR	Account Group Governmental Accounting Standard Board Description	VARCHAR2	30	M_GLDW1	ACCOUNT_TBL CURR_ACCOUNT_VW	A textual description of the code used to group accounts for U of M to meet financial reporting standards.	Examples of valid values: Scholarships and Fellowships; Accounts Payable; Other
ACCOUNT_GRP_ICA	Account Group Inter Collegiate Athletics Code	VARCHAR2	20	M_GLDW1	ACCOUNT_TBL CURR_ACCOUNT_VW	A code used to group revenue and expense accounts that are similar in nature, and represent the Athletic department's financial line descriptions from the UM_ACCT_ICA tree.	Example of valid values: VIDEO_EXPENSES = Video Expenses; SPECIAL_EVENTS = Special Events; SUMMER_CAMP/CLINIC_F = Summer Camp/Clinic Fees
ACCOUNT_GRP_ICA_DESCR	Account Group Inter Collegiate Athletics Description	VARCHAR2	30	M_GLDW1	ACCOUNT_TBL CURR_ACCOUNT_VW	A textual description of the code used to group revenue and expense accounts that are similar in nature, and represent the Athletic department's financial line descriptions from the UM_ACCT_ICA tree.	Examples of valid values: Video Expenses; Special Events; Summer Camp/Clinic Fees
ACCOUNT_GRP_ISR_BUDGET	Account Group Institute for Social Research (ISR) Budget Code	VARCHAR2	6	M_GLDW1	ACCOUNT_TBL CURR_ACCOUNT_VW	A code used to associate expense accounts with higher-level budgetary accounts used for ISR Budget. Note: sourced from the BUD_TRAN_ACCT_ISR tree.	Examples of valid values: 911100 = Administrative Salaries; 911550 = Respondents/Subjects; 911900 = Research Supplies & Services
ACCOUNT_GRP_ISR_BUDGET_DESCR	Account Group Institute for Social Research (ISR) Budget Description	VARCHAR2	30	M_GLDW1	ACCOUNT_TBL CURR_ACCOUNT_VW	A textual description of the code used to associate expense accounts with higher-level budgetary accounts used for ISR Budgets.	Examples of valid values: Administrative Salaries; Respondents/Subjects; Research Supplies & Services
ACCOUNT_GRP_LVL_1_TXT	Account Group Level One Text	VARCHAR2	100	M_GLDW1	ACCOUNT_GRP_HIRCHY	A free form textual field describing the first level of a custom hierarchy, defined by the account group source name, that groups account codes for reporting purposes.	Examples of valid values: Free form text
ACCOUNT_GRP_LVL_2_TXT	Account Group Level Two Text	VARCHAR2	100	M_GLDW1	ACCOUNT_GRP_HIRCHY	A free form textual field describing the second level of a custom hierarchy, defined by the account group source name, that groups account codes for reporting purposes.	Examples of valid values: Free form text
ACCOUNT_GRP_LVL_3_TXT	Account Group Level Three Text	VARCHAR2	100	M_GLDW1	ACCOUNT_GRP_HIRCHY	A free form textual field describing the third level of a custom hierarchy, defined by the account group source name, that groups account	Examples of valid values: Free form text

Physical Element Name	Logical Element Name	Format Type	Format Length	Data Set	Table Locations	Element Definition	Examples of Valid Values
						codes for reporting purposes.	
ACCOUNT_GRP_LVL_4_TXT	Account Group Level Four Text	VARCHAR2	100	M_GLDW1	ACCOUNT_GRP_HIRCHY	A free form textual field describing the fourth level of a custom hierarchy, defined by the account group source name, that groups account codes for reporting purposes.	Examples of valid values: Free form text
ACCOUNT_GRP_MED_SCH	Account Group Medical School Code	VARCHAR2	20	M_GLDW1	ACCOUNT_TBL CURR_ACCOUNT_VW	A code used to group revenue and expense accounts that are similar in nature, and represent the Medical School's financial line descriptions from the MEDSCH_ACCT_RNG2 tree.	Examples of valid values:MS_CLINIC_EXPENSE = Clinic Expenses; MS_MALPRACTICE = Malpractice; MS_PRIMARY_CARE_SUPP = Primary Care Support
ACCOUNT_GRP_MED_SCH_DESCR	Account Group Medical School Description	VARCHAR2	30	M_GLDW1	ACCOUNT_TBL CURR_ACCOUNT_VW	A textual description of the code used to group revenue and expense accounts that are similar in nature, and represent the Medical School's financial line descriptions from the MEDSCH_ACCT_RNG2 tree.	Examples of valid values:Clinic Expenses; Malpractice; Primary Care Support
ACCOUNT_GRP_SP_VOL_RES	Account Group Sponsored Programs Volume Research Code	VARCHAR2	20	M_GLDW1	ACCOUNT_TBL CURR_ACCOUNT_VW	A code used to group accounts by sponsored research. Note: sourced from the SP_VOL_RESRCH_ACCT tree.	Examples of valid values:SAL_AND_WAGES = Salaries and Wages; TRANSFERS_AND_DIST = Transfers and Distributions; INDIRECT_COST = Indirect Cost
ACCOUNT_GRP_SP_VOL_RES_DESCR	Account Group Sponsored Programs Volume Research Description	VARCHAR2	30	M_GLDW1	ACCOUNT_TBL CURR_ACCOUNT_VW	A textual description of the code used to group accounts by sponsored research.	Examples of valid values:Salaries and Wages; Transfers and Distributions; Indirect Cost
ACCOUNT_GRP_SPON_PROJ	Account Group Sponsored Project Code	VARCHAR2	20	M_GLDW1	ACCOUNT_TBL CURR_ACCOUNT_VW	A code used to associate expense accounts with higher-level budgetary accounts used for sponsored projects. Note: sourced from the BUD_TRAN_ACCT_WP tree.	Examples of valid values:911000 = Research Salaries; 911650 = Student Aid; 912500 = Travel Domestic
ACCOUNT_GRP_SPON_PROJ_DESCR	Account Group Sponsored Project Description	VARCHAR2	30	M_GLDW1	ACCOUNT_TBL CURR_ACCOUNT_VW	A textual description of the code used to associate expense accounts with higher-level budgetary accounts used for sponsored projects.	Examples of valid values:Research Salaries; Student Aid; Travel Domestic
ACCOUNT_GRP_SRC_NM	Account Group Hierarchy Source Name	VARCHAR2	100	M_GLDW1	ACCOUNT_GRP_HIRCHY	A free form textual field describing the person, group, unit, department, etc. who is	Examples of valid values: Free form text

Physical Element Name	Logical Element Name	Format Type	Format Length	Data Set	Table Locations	Element Definition	Examples of Valid Values
						responsible for the management of one or more user defined account group hierarchies.	
ACCOUNT_GRP_SRC_USE	Account Group Source Use Code	VARCHAR2	20	M_GLDW1	ACCOUNT_TBL CURR_ACCOUNT_VW	A code used to group accounts based on the Source/Use model. Note: sourced from the UM_SRC_USE_ACCT tree.	Examples of valid values:FED GRANTS/ CONTRACTS; GIFTS; FACULTY SALARIES
ACCOUNT_GRP_SRC_USE_DESCR	Account Group Source Use Description	VARCHAR2	30	M_GLDW1	ACCOUNT_TBL CURR_ACCOUNT_VW	A textual description of the code used to group accounts based on the Source/Use model.	Examples of valid values:Federal Grants/Contracts; Gifts; Faculty Salaries
ACCOUNT_GRP_SRC_USE_TYPE	Account Group Source Use Type Code	VARCHAR2	10	M_GLDW1	ACCOUNT_TBL CURR_ACCOUNT_VW	A code indicating whether an account is a source (revenue) or a use (expense). This is used for reporting to the Office of Budget Planning. Note: sourced from the UM_SRC_USE_ACCT tree.	Examples of valid values:Source; Use
ACCOUNT_GRP_UMHS	Account Group University of Michigan Health System Code	VARCHAR2	20	M_GLDW1	ACCOUNT_TBL CURR_ACCOUNT_VW	A code used to group revenue and expense accounts that are similar in nature, and represent the University of Michigan Health System's financial line descriptions from the UMHS_ACCT_GROUP tree.	Examples of valid values:COMMODITIES = Commodities; IDC_FED_NONFED = Indirect Cost - Federal/NonFed; NURSING_MNA_OT = Nursing MNA - Overtime; EQUIP&OTHER_MAINTC = Equipment & Other Maintenance
ACCOUNT_GRP_UMHS_DESCR	Account Group University of Michigan Health System Description	VARCHAR2	30	M_GLDW1	ACCOUNT_TBL CURR_ACCOUNT_VW	A textual description of the code used to group revenue and expense accounts that are similar in nature, and represent the University of Michigan Health System's financial line descriptions from the UMHS_ACCT_GROUP tree.	Examples of valid values:Commodities; Indirect Cost - Federal/NonFed; Nursing MNA - Overtime; Equipment & Other Maintenance
ACCOUNT_TYPE	Account Type Code	VARCHAR2	1	M_GLDW1	ACCOUNT_TBL CURR_ACCOUNT_VW	A code used to indicate the type of account.	Examples of valid values:A = Asset; E = Expense
ACCOUNT_TYPE_DESCR	Account Type Description	VARCHAR2	30	M_GLDW1	ACCOUNT_TBL CURR_ACCOUNT_VW	A textual description of the code used to indicate the type of account.	Examples of valid values:Asset; Expense
ACCOUNTING_DT	Accounting Date	DATE		M_GLDW1	AR_ITEM AR_ITEM_ACTIVITY AR_ITEM_DST BILL_ACCT_ENTRY BILL_HDR	The accounting date associated with the transaction. Used in the validation and execution of budgeting and transaction postings.	Examples of valid values:01/01/1999

Physical Element Name	Logical Element Name	Format Type	Format Length	Data Set	Table Locations	Element Definition	Examples of Valid Values
ACCOUNTING_PERIOD	Accounting Period Code	NUMBER	3	M_GLDW1	AR_ITEM_DST BILL_ACCT_ENTRY CAL_DETP_TBL JRNL_HEADER	A code used to identify the university accounting period which represents a fiscal calendar month or an adjustment period.	Examples of valid values:3; 4; 9; 998; 999
ACCTG_PERIOD_BEGIN_DT	Accounting Period Start Date	DATE		M_GLDW1	CAL_DETP_TBL	The date on which an accounting period begins. The beginning date is in the format MM/DD/YYYY.	Examples of valid values:01/01/1999
ACCTG_PERIOD_END_DT	Accounting Period End Date	DATE		M_GLDW1	CAL_DETP_TBL	The date on which an accounting period ends. The ending date is in the format MM/DD/YYYY.	Examples of valid values:02/28/1999
ACCTG_PERIOD_OPEN_IND	Accounting Period Open Indicator	VARCHAR2	1	M_GLDW1	CAL_DETP_TBL	A code indicating whether the accounting period is currently open in the general ledger system.	Examples of valid values: Y = Yes; N = No
ACTIVITY_POST_DT	Activity Post Date	DATE		M_GLDW1	AR_ITEM_ACTIVITY	The date on which an activity for an accounts receivable item was posted.	Examples of valid values:11/06/2003
AR_AGING_CATEGORY	Accounts Receivable Aging Category Code	VARCHAR2	2	M_GLDW1	AR_ITEM	A code representing the accounts receivable aging report grouping for open accounts receivable items..	Examples of valid values:01 = Current; 02 = 31-60; 03 = 61-90; 04 = 91-120; 05 = 121-150; 06 = 151-180
AR_AGING_CATEGORY_DESCR	Accounts Receivable Aging Category Description	VARCHAR2	30	M_GLDW1	AR_ITEM	A textual description of the code representing the accounts receivable aging report grouping for open accounts receivable items.	Examples of valid values:Current; 31-60; 61-90; 91-120; 121-150; 151-180
AR_COLLECTION_DT	Accounts Receivable Collection Date	DATE		M_GLDW1	AR_ITEM	The date on which an accounts receivable item was assigned to a collection agency.	Examples of valid values:null; 06/22/2005; 07/07/2006
AR_COLLECTION_STATUS	Accounts Receivable Collection Status Code	VARCHAR2	3	M_GLDW1	AR_ITEM	A code specifying the assigned collection agency of an accounts receivable item. Unassigned items will have no code.	Examples of valid values:NES = National Enterprise System; TRG = TRG Collection Service; UPS = Universal Professional Svcs
AR_COLLECTION_STATUS_DESCR	Accounts Receivable Collection Status Description	VARCHAR2	30	M_GLDW1	AR_ITEM	A textual description of the code specifying the assigned collection agency of an accounts receivable item. Unassigned items will have no description.	Examples of valid values:National Enterprise System; TRG Collection Service; Universal Professional Svcs
AR_COLLECTOR_CD	Accounts Receivable Collector Code	VARCHAR2	8	M_GLDW1	AR_ITEM	A code representing the collector of an accounts receivable item.	Examples of valid values:MERIT = Merit Collector; R02 = Barbara Marie de la Garza; S06 = Joseph L.

Physical Element Name	Logical Element Name	Format Type	Format Length	Data Set	Table Locations	Element Definition	Examples of Valid Values
							Smith
AR_COLLECTOR_NAME1	Accounts Receivable Collector Name	VARCHAR2	40	M_GLDW1	AR_ITEM	A textual description of the code representing the collector of an accounts receivable item. For people this is a person's preferred name, if available; otherwise, this is a person's primary name.	Examples of valid values: Merit Collector; Barbara Marie de la Garza; Joseph L. Smith
AR_ITEM	Accounts Receivable Item	VARCHAR2	30	M_GLDW1	AR_ITEM AR_ITEM_ACTIVITY AR_ITEM_ACTIVITY_OWNER AR_ITEM_DST AR_ITEM_OWNER	A system assigned number used to uniquely identify a specific accounts receivable item. Items originating in Billing will use the number assigned to the invoice in Billing	Examples of valid values: 1000001; 1001234; 567243
AR_ITEM_ACT_ADDL_REASON	Accounts Receivable Item Activity Additional Reason Code	VARCHAR2	10	M_GLDW1	AR_ITEM_ACTIVITY	A code representing an additional reason a collector may assign to an activity related to an accounts receivable item.	Examples of valid values: BADDEBT = WO Dept-Bad Debt/Uncollectible; PRDEDUCTLN = GNLNS payment via pay deduct; DUPPAY = WO Refund - Duplicate Payment
AR_ITEM_ACT_ADDL_REASON_DESCR	Accounts Receivable Item Activity Additional Reason Description	VARCHAR2	30	M_GLDW1	AR_ITEM_ACTIVITY	A textual description of the code representing an additional reason a collector may assign to an activity related to an accounts receivable item.	Examples of valid values: WO Dept-Bad Debt/Uncollectible; GNLNS payment via pay deduct; WO Refund - Duplicate Payment
AR_ITEM_ACT_ENTRY_AMT	Accounts Receivable Item Activity Entry Amount	NUMBER	15,2	M_GLDW1	AR_ITEM_ACTIVITY	The dollar amount of an activity entry related to an accounts receivable item.	Examples of valid values: -944,652.62; 137.32; 11,033.98
AR_ITEM_ACT_ENTRY_REASON	Accounts Receivable Item Activity Entry Reason Code	VARCHAR2	5	M_GLDW1	AR_ITEM_ACTIVITY	A code representing the reason for an activity related to an accounts receivable item. Existence and values of this code are contingent on the Entry Type.	Examples of valid values: ADJ = Adjustment; FORD = Ford Surcharge WO; blank
AR_ITEM_ACT_ENTRY_REASON_DESCR	Accounts Receivable Item Activity Entry Reason Description	VARCHAR2	30	M_GLDW1	AR_ITEM_ACTIVITY	A textual description of the code representing the reason for an activity related to an accounts receivable item. Existence and values of this description are contingent on the Entry Type.	Examples of valid values: Adjustment; Ford Surcharge WO; blank
AR_ITEM_ACT_ENTRY_TYPE	Accounts Receivable Item Activity Entry Type Code	VARCHAR2	5	M_GLDW1	AR_ITEM_ACTIVITY	A code representing the type of activity related to an accounts receivable item.	Examples of valid values: CM = Credit Memo; IN = Invoice; PY = Payment

Physical Element Name	Logical Element Name	Format Type	Format Length	Data Set	Table Locations	Element Definition	Examples of Valid Values
AR_ITEM_ACT_ENTRY_TYPE_DE SCR	Accounts Receivable Item Activity Entry Type Description	VARCHAR2	30	M_GLDW1	AR_ITEM_ACTIVITY	A textual description of the code representing the type of activity related to an accounts receivable item.	Examples of valid values:Credit Memo; Invoice; Payment
AR_ITEM_BAL_AMT	Accounts Receivable Item Balance Amount	NUMBER	15,2	M_GLDW1	AR_ITEM	The dollar amount of the balance for an accounts receivable item.	Examples of valid values:- 681.50; 24.48; 18,071.60
AR_ITEM_DST_SEQ_NUM	Accounts Receivable Item Distribution Sequence Number	NUMBER	6	M_GLDW1	AR_ITEM_DST	A system assigned, sequential number used to define the accounting distributions for the accounts receivable item.	Examples of valid values:1; 3; 4
AR_ITEM_DT	Accounts Receivable Item Date	DATE		M_GLDW1	AR_ITEM	The date assigned to an accounts receivable item. This date is more commonly known as an Invoice Date, which is the term used in Billing for items that originate as invoices.	Examples of valid values:09/30/1992; 03/16/2005; 09/01/2006
AR_ITEM_DUE_DAYS	Accounts Receivable Item Due Days	NUMBER	3	M_GLDW1	AR_ITEM	A grace period in days that a collector may allow the customer to pay an accounts receivable item beyond the due date. This grace period is a factor in calculation of the Aging category.	Examples of valid values:0; 2; 5
AR_ITEM_DUE_DT	Accounts Receivable Item Due Date	DATE		M_GLDW1	AR_ITEM	The date on which an accounts receivable item is due.	Examples of valid values:10/30/1992; 12/05/2004; 10/01/2013
AR_ITEM_ENTRY_REASON	Accounts Receivable Item Entry Reason Code	VARCHAR2	5	M_GLDW1	AR_ITEM	A code representing the reason for the original activity of an accounts receivable item. Existence and values of this code are contingent on the Entry Type.	Examples of valid values:ADJ = Adjustment; FINAL = Final; REG = Regular blank
AR_ITEM_ENTRY_REASON_DES CR	Accounts Receivable Item Entry Reason Description	VARCHAR2	30	M_GLDW1	AR_ITEM	A textual description of the code representing the reason for the original activity of an accounts receivable item. Existence and values of this description are contingent on the Entry Type.	Examples of valid values:Adjustment; Final; Regular blank
AR_ITEM_ENTRY_TYPE	Accounts Receivable Item Entry Type Code	VARCHAR2	5	M_GLDW1	AR_ITEM	A code representing the type of the original activity of an accounts receivable item	Examples of valid values:CRCON = Credit Conversion; IN = Invoice; INCON = Invoice Conversion
AR_ITEM_ENTRY_TYPE_DESCR	Accounts Receivable Item Entry Type Description	VARCHAR2	30	M_GLDW1	AR_ITEM	A textual description of the code representing the type of the original activity of an accounts receivable item.	Examples of valid values:Credit Conversion; Invoice; Invoice Conversion

Physical Element Name	Logical Element Name	Format Type	Format Length	Data Set	Table Locations	Element Definition	Examples of Valid Values
AR_ITEM_LINE	Accounts Receivable Item Line Number	NUMBER	6	M_GLDW1	AR_ITEM AR_ITEM_ACTIVITY AR_ITEM_ACTIVITY_OWNER AR_ITEM_DST AR_ITEM_OWNER	A sequential number used to uniquely identify each line of an accounts receivable item. Current university practice is not to split items so only one value will be found.	Examples of valid values:01/00/1900
AR_ITEM_ORIG_AMT	Accounts Receivable Amount	NUMBER	15,2	M_GLDW1	AR_ITEM	The original dollar amount of an accounts receivable item.	Examples of valid values:-280.00; 945.86; 2,920,183.00
AR_ITEM_RECON_ASSGN_UNQNM	Accounts Receivable Reconciliation Assigned To Uniqname	VARCHAR2	30	M_GLDW1	AR_ITEM_DST	The operator identification of the person who is assigned to reconcile the transaction.	Examples of valid values: HROSE; MHASKINS; RJSCHMID
AR_ITEM_RECON_FLG	Accounts Receivable Reconciliation Flag	VARCHAR2	1	M_GLDW1	AR_ITEM_DST	A code indicating whether an accounts receivable accounting line has been reconciled or not.	Examples of valid values:Y = Yes; N = No
AR_ITEM_RECON_LAST_UPDATE_BY	Accounts Receivable Reconciliation Last Update By Operator Identification Code	VARCHAR2	30	M_GLDW1	AR_ITEM_DST	The operator identification of the last person to have reconciled or to have added a note to the accounts receivable accounting line.	Examples of valid values:RKLAFFKE; DSELL
AR_ITEM_RECON_LAST_UPDATE_DT	Accounts Receivable Reconciliation Last Update Date	DATE		M_GLDW1	AR_ITEM_DST	The date on which the accounts receivable reconciliation or note was last updated.	Examples of valid values:01/10/1999
AR_ITEM_RECON_NOTE	Accounts Receivable Reconciliation Note	VARCHAR2	254	M_GLDW1	AR_ITEM_DST	The reconciliation notes related to an accounts receivable accounting line.	Examples of valid values:Credit memo to be processed.
AR_ITEM_RECON_RSLTN_RSN_CD	Accounts Receivable Reconciliation Resolution Reason Code	VARCHAR2	3	M_GLDW1	AR_ITEM_DST	A code representing the reason why a resolution type was chosen, as manually selected by the assigned reconciler.	Examples of valid values: IAP; ICF; IPM
AR_ITEM_RECON_RSLTN_RSN_DESCR	Accounts Receivable Reconciliation Resolution Reason Description	VARCHAR2	30	M_GLDW1	AR_ITEM_DST	A textual description of the code representing the reason why a resolution type was chosen, as manually selected by the assigned reconciler.	Examples of valid values: Incorrect Approver; Incorrect Chartfields; Incorrect Purchasing Method
AR_ITEM_RECON_RSLTN_TYPE_CD	Accounts Receivable Reconciliation Resolution Type Code	VARCHAR2	3	M_GLDW1	AR_ITEM_DST	A code representing the resolution type of a transaction, which is manually selected by the assigned reconciler.	Examples of valid values: AP; CA; JE

Physical Element Name	Logical Element Name	Format Type	Format Length	Data Set	Table Locations	Element Definition	Examples of Valid Values
AR_ITEM_RECON_RSLTN_TYPE_DESCR	Accounts Receivable Reconciliation Resolution Type Description	VARCHAR2	30	M_GLDW1	AR_ITEM_DST	A textual description of the code representing the resolution type of a transaction, which is manually selected by the assigned reconciler.	Examples of valid values: Additional Pay; Confirmed as Accurate; Journal Entry Required
AR_ITEM_RECON_STATUS_CD	Accounts Receivable Reconciliation Status Code	VARCHAR2	1	M_GLDW1	AR_ITEM_DST	A code representing the reconciliation status of the transaction.	Examples of valid values: 1; 2; 3
AR_ITEM_RECON_STATUS_DESCR	Accounts Receivable Reconciliation Status Description	VARCHAR2	30	M_GLDW1	AR_ITEM_DST	A textual description of the code representing the reconciliation status of the transaction.	Examples of valid values: 1 WIP; 2 New; 3 Pend Unit
AR_ITEM_RECON_UNIT_REV_IND	Accounts Receivable Reconciliation Unit Review Indicator	VARCHAR2	1	M_GLDW1	AR_ITEM_DST	A code indicating whether an accounts receivable accounting line has been reviewed by a unit during reconciliation.	Examples of valid values: Y=Yes; N=No
AR_ITEM_SEQ_NUM	Accounts Receivable Item Sequence Number	NUMBER	3	M_GLDW1	AR_ITEM_ACTIVITY AR_ITEM_ACTIVITY_OWNER AR_ITEM_DST	A sequential number used to uniquely identify each activity related to an accounts receivable item.	Examples of valid values:1; 13; 56
AR_ITEM_STATUS	Accounts Receivable Item Status Code	VARCHAR2	1	M_GLDW1	AR_ITEM	A code specifying the current status of an accounts receivable item.	Examples of valid values:C = Closed; O = Open
AR_ITEM_STATUS_DESCRSHORT	Accounts Receivable Item Status Short Description	VARCHAR2	10	M_GLDW1	AR_ITEM	An abbreviated textual description of the code specifying the current status of an accounts receivable item.	Examples of valid values:Closed; Open
AR_LAST_ACTIVITY_ITEM_SEQ_NUM	Accounts Receivable Last Activity Item Sequence Number	NUMBER	3	M_GLDW1	AR_ITEM	The sequential number of the latest activity to take place for an accounts receivable item.	Examples of valid values:1; 35; 56
AR_LAST_ACTIVITY_POST_DT	Accounts Receivable Last Activity Post Date	DATE		M_GLDW1	AR_ITEM	The date on which the latest activity for an accounts receivable item was posted.	Examples of valid values:11/06/2003; 04/12/2005; 08/10/2006
AR_LAST_STATEMENT_DT	Accounts Receivable Last Statement Date	DATE		M_GLDW1	AR_ITEM	The date on which the latest statement was generated for correspondence with the customer about open accounts receivable items.	Examples of valid values:02/26/2004; 06/20/2005; 07/10/2006; null
AR_PYMNT_TERMS_CD	Accounts Receivable Terms Code	VARCHAR2	5	M_GLDW1	AR_ITEM BILL_HDR	A code representing the payment terms associated with an accounts receivable item.	Examples of valid values:21ON3 = 2% 10 Days, Net; AB3ON = 30 Net; AB45N = 45 Days Net (Foreign)
AR_PYMNT_TERMS_DESCR50	Accounts Receivable Terms Description	VARCHAR2	50	M_GLDW1	AR_ITEM BILL_HDR	A textual description of the code representing the payment terms associated with an accounts	Examples of valid values:2% 10 Days, Net; 30 Net; 45 Days Net (Foreign)

Physical Element Name	Logical Element Name	Format Type	Format Length	Data Set	Table Locations	Element Definition	Examples of Valid Values
						receivable item.	
AWARD_ID	Award Project Grant Code	VARCHAR2	15	M_GLDW1	CURR_PROJECT_GRANT_VW PROJECT_GRANT_TBL	A code representing the Award Project Grant (i.e., those with a prefix of 'AWD') to which the project grant is related for post award process and reporting needs.	Examples of valid values: AWD137556; AWD142971; AWD264722
BILL_ACCT_RECON_ASSGN_UNQNM	Bill Account Reconciliation Assigned To Uniqname	VARCHAR2	30	M_GLDW1	BILL_ACCT_ENTRY	The operator identification of the person who is assigned to reconcile the transaction.	Examples of valid values: HROSE; MHASKINS; RJSCHMID
BILL_ACCT_RECON_FLG	Bill Account Reconciliation Flag	VARCHAR2	1	M_GLDW1	BILL_ACCT_ENTRY	A code indicating whether a bill accounting line has been reconciled or not.	Examples of valid values: Y = Yes; N = No
BILL_ACCT_RECON_LAST_UPDATE_BY	Bill Account Reconciliation Last Update By Operator Identification Code	VARCHAR2	30	M_GLDW1	BILL_ACCT_ENTRY	The operator identification of the last person to have reconciled or to have added a note to the bill accounting line.	Examples of valid values: RKLAFKKE; DSELL
BILL_ACCT_RECON_LAST_UPDATE_DT	Bill Account Reconciliation Last Update Date	DATE		M_GLDW1	BILL_ACCT_ENTRY	The date on which the bill reconciliation or note was last updated.	Examples of valid values: 01/10/1999
BILL_ACCT_RECON_NOTE	Bill Account Reconciliation Note	VARCHAR2	254	M_GLDW1	BILL_ACCT_ENTRY	The reconciliation notes related to a bill accounting line.	Examples of valid values: Credit memo to be processed.
BILL_ACCT_RECON_RSLTN_RSN_CD	Bill Account Reconciliation Resolution Reason Code	VARCHAR2	3	M_GLDW1	BILL_ACCT_ENTRY	A code representing the reason why a resolution type was chosen, as manually selected by the assigned reconciler.	Examples of valid values: IAP; ICF; IPM
BILL_ACCT_RECON_RSLTN_RSN_DES	Bill Account Reconciliation Resolution Reason Description	VARCHAR2	30	M_GLDW1	BILL_ACCT_ENTRY	A textual description of the code representing the reason why a resolution type was chosen, as manually selected by the assigned reconciler.	Examples of valid values: Incorrect Approver; Incorrect Chartfields; Incorrect Purchasing Method
BILL_ACCT_RECON_RSLTN_TYP_E_CD	Bill Account Reconciliation Resolution Type Code	VARCHAR2	3	M_GLDW1	BILL_ACCT_ENTRY	A code representing the resolution type of a transaction, which is manually selected by the assigned reconciler.	Examples of valid values: AP; CA; JE
BILL_ACCT_RECON_RSLTN_TYP_E_DES	Bill Account Reconciliation Resolution Type Description	VARCHAR2	30	M_GLDW1	BILL_ACCT_ENTRY	A textual description of the code representing the resolution type of a transaction, which is manually selected by the assigned reconciler.	Examples of valid values: Additional Pay; Confirmed as Accurate; Journal Entry Required
BILL_ACCT_RECON_STATUS_CD	Bill Account Reconciliation Status Code	VARCHAR2	1	M_GLDW1	BILL_ACCT_ENTRY	A code representing the reconciliation status of the transaction.	Examples of valid values: 1; 2; 3

Physical Element Name	Logical Element Name	Format Type	Format Length	Data Set	Table Locations	Element Definition	Examples of Valid Values
BILL_ACCT_RECON_STATUS_DE SCR	Bill Account Reconciliation Status Description	VARCHAR2	30	M_GLDW1	BILL_ACCT_ENTRY	A textual description of the code representing the reconciliation status of the transaction.	Examples of valid values: 1 WIP; 2 New; 3 Pend Unit
BILL_ACCT_RECON_UNIT_REV_I ND	Bill Account Reconciliation Unit Review Indicator	VARCHAR2	1	M_GLDW1	BILL_ACCT_ENTRY	A code indicating whether a bill accounting line has been reviewed by a unit during reconciliation.	Examples of valid values: Y=Yes; N=No
BILL_CYCLE_DESCR	Bill Cycle Description	VARCHAR2	30	M_GLDW1	BILL_HDR	A textual description of the code representing the cycle type of an invoice.	Examples of valid values:Automatically Produced; Quarterly - January; Priority 3, Third Week
BILL_CYCLE_ID	Bill Cycle Identification Code	VARCHAR2	10	M_GLDW1	BILL_HDR	A code representing the cycle type of an invoice.	Examples of valid values:AUTO = Automatically Produced; JQ = Quarterly - January; P3 = Priority 3, Third Week
BILL_FROM_DT	Bill From Date	DATE		M_GLDW1	BILL_HDR	The date on which a range of dates for an invoice begins if the invoice has a range of dates.	Examples of valid values:09/01/2005; 01/01/2006; null
BILL_INVOICE_DT	Bill Invoice Date	DATE		M_GLDW1	BILL_HDR	The date assigned to an invoice. This date is later used to help determine the due date once the invoice is created as an accounts receivable item.	Examples of valid values:04/15/2004; 10/24/2005; 07/11/2006
BILL_LINE_DESCR	Bill Line Description	VARCHAR2	30	M_GLDW1	BILL_LINE	A textual description of an invoice line.	Examples of valid values:Amount due per attached; \$1,315.03, less 2%; #9-Annual Report - Phase III
BILL_LINE_DST_SEQ_NUM	Bill Line Distribution Sequence Number	NUMBER	3	M_GLDW1	BILL_ACCT_ENTRY	A system assigned, sequential number used to define the accounting distributions for an invoice.	Examples of valid values:1; 3; 4
BILL_LINE_QTY	Bill Line Quantity	NUMBER	15,4	M_GLDW1	BILL_LINE	A number representing the quantity of a specific commodity which is requested on an invoice line.	Examples of valid values:1.0000; 3.0000; 4.0000
BILL_LINE_SEQ_NUM	Bill Line Sequence Number	NUMBER	5	M_GLDW1	BILL_ACCT_ENTRY BILL_LINE	A sequential number used to uniquely identify each invoice line.	Examples of valid values:1; 5; 10
BILL_LINE_TYPE	Bill Line Type Code	VARCHAR2	4	M_GLDW1	BILL_LINE	A code representing the type of an invoice line.	Examples of valid values:REV = Revenue Line
BILL_LINE_TYPE_DESCR	Bill Line Type Description	VARCHAR2	30	M_GLDW1	BILL_LINE	A textual description of the code representing the type of an invoice line.	Examples of valid values:Revenue Line
BILL_LINE_UNIT_AMT	Bill Line Unit Amount	NUMBER	15,4	M_GLDW1	BILL_LINE	The dollar amount per commodity which is requested	Examples of valid values:- 2,920,183.0000; 3,579.0000;

Physical Element Name	Logical Element Name	Format Type	Format Length	Data Set	Table Locations	Element Definition	Examples of Valid Values
						on an invoice line,	2,440,000.0000
BILL_SOURCE_ID	Bill Source Identification Code	VARCHAR2	10	M_GLDW1	BILL_HDR	A value indicating the source of an invoice.	Examples of valid values:CORPAY; GL-INT; ONLINE
BILL_SPONSOR	Billing Sponsor Code	VARCHAR2	6	M_GLDW1	CURR_PROJECT_GRANT_VW PROJECT_GRANT_TBL	A code representing the awarding department.	Examples of valid values:288000 = Ford Motor Company; 573040 = Michigan, State of, Education, Department of; 895700 = Health and Human Services, Department of-National Institutes of Health
BILL_SPONSOR_DESCR100	Billing Sponsor Code Description	VARCHAR2	100	M_GLDW1	CURR_PROJECT_GRANT_VW PROJECT_GRANT_TBL	A textual description of the code representing the awarding department.	Examples of valid values:Ford Motor Company; Michigan, State of, Education, Department of; Health and Human Services, Department of-National Institutes of Health
BILL_TO_DT	Bill To Date	DATE		M_GLDW1	BILL_HDR	The date on which a range of dates for an invoice ends if the invoice has a range of dates.	Examples of valid values:09/30/2005; 11/30/2005; null
BILL_TYPE_DESCRSHORT	Bill Type Short Description	VARCHAR2	10	M_GLDW1	BILL_HDR	An abbreviated textual description of the code representing the type of the bill.	Examples of valid values:Adjustment; General; Regular
BILL_TYPE_ID	Bill Type Identification Code	VARCHAR2	3	M_GLDW1	BILL_HDR	A code representing the type of the bill.	Examples of valid values:ADJ = Adjustment; GEN = General; REG = Regular
BILLING_SPECIALIST_CD	Billing Specialist Code	VARCHAR2	8	M_GLDW1	BILL_HDR	A code representing a billing specialist.	Examples of valid values:03 = Joseph L. Smith;; R03 = Barbara Marie de la Garza; T04 = William Boyd Washington
BILLING_SPECIALIST_NAME1	Billing Specialist Name One	VARCHAR2	40	M_GLDW1	BILL_HDR	The name of a billing specialist. This is a person's preferred name, if available; otherwise, this is a person's primary name.	Examples of valid values:Joseph L. Smith;; Barbara Marie de la Garza; William Boyd Washington
BUDG_MUST_EQUAL_REV	Budget Must Equal Revenue Code	VARCHAR2	1	M_GLDW1	CURR_PROJECT_GRANT_VW PROJECT_GRANT_TBL	A code specifying that a budget must equal the incoming revenue.	Examples of valid values:Y = Yes; N = No
BUSINESS_UNIT	Business Unit Code	VARCHAR2	5	M_GLDW1	AR_ITEM AR_ITEM_ACTIVITY AR_ITEM_ACTIVITY_OWNER AR_ITEM_DST AR_ITEM_OWNER BILL_ACCT_ENTRY BILL_HDR BILL_LINE	A code representing the highest organizational unit of an invoice or accounts receivable item	Examples of valid values:SPFED = Federal Sponsored Activity; GNPAY = General Receivables - Payroll; SPNON = Non Federal Sponsored Activity

Physical Element Name	Logical Element Name	Format Type	Format Length	Data Set	Table Locations	Element Definition	Examples of Valid Values
BUSINESS_UNIT_DESCR	Business Unit Description	VARCHAR2	30	M_GLDW1	AR_ITEM AR_ITEM_ACTIVITY AR_ITEM_ACTIVITY_OWNER AR_ITEM_DST AR_ITEM_OWNER BILL_ACCT_ENTRY BILL_HDR BILL_LINE	A textual description of the code representing the highest organizational unit of an invoice or accounts receivable item	Examples of valid values: Federal Sponsored Activity; General Receivables - Payroll; Non Federal Sponsored Activity
CAL_MONTH_CODE	Calendar Month Code	VARCHAR2	2	M_GLDW1	CAL_DETP_TBL	A code representing the calendar month.	Examples of valid values: 07 = July; 08 = August; 12 = December
CAL_MONTH_DESCR	Calendar Month Description	VARCHAR2	30	M_GLDW1	CAL_DETP_TBL	The name of the calendar month.	Examples of valid values: July; August; December
CAL_YEAR	Calendar Year	VARCHAR2	4	M_GLDW1	CAL_DETP_TBL	A number representing the year beginning January 1 and ending December 31 in the format of CCYY.	Examples of valid values: 1998; 1999; 2000
CFDA_NBR	Catalog Of Federal Domestic Assistance Number Code	NUMBER	5,3	M_GLDW1	CURR_PROJECT_GRANT_VW PROJECT_GRANT_TBL	A code designated by the Federal Government representing the type of grant awarded.	Examples of valid values: 81.049; 93.864; 93.989
CLASS	Class Code	VARCHAR2	5	M_GLDW1	AR_ITEM_DST BILL_ACCT_ENTRY CLASS_CF_TBL CNVCHARTFD CURR_CLASS_CF_VW CURR_PROJECT_GRANT_VW JRNL_LN PROJECT_GRANT_TBL	A code used to group related activities directed towards the accomplishment of a set of common identifiable objectives or purposes.	Examples of valid values: 11000 = General Academic Instruction; 21000 = Departmental Research; 72000 = Utilities; 1100x = Gen Acad Instr-ICRX
CLASS_DESCR	Class Name	VARCHAR2	30	M_GLDW1	CLASS_CF_TBL CURR_CLASS_CF_VW	A textual description of the code used to group related activities directed towards the accomplishment of a set of common identifiable objectives or purposes.	Examples of valid values: General Academic Instruction; Departmental Research; Utilities; Gen Acad Instr-ICRX
CLASS_EFF_STATUS	Class Effective Status Code	VARCHAR2	1	M_GLDW1	CLASS_CF_TBL CURR_CLASS_CF_VW	A code specifying the current status of a class.	Examples of valid values: A = Active; I = Inactive
CLASS_EFFDT	Class Effective Date	DATE		M_GLDW1	CLASS_CF_TBL CURR_CLASS_CF_VW	The date on which the class status becomes effective.	Examples of valid values: 01/01/1998
CLASS_GRP	Class Group Code	VARCHAR2	20	M_GLDW1	CLASS_CF_TBL CURR_CLASS_CF_VW	A code used to group classes that serve a similar purpose.	Examples of valid values: INSTRUCTION; ADMINISTRATION; SCHOLARSHIPS
CLASS_GRP_DESCR	Class Group Description	VARCHAR2	30	M_GLDW1	CLASS_CF_TBL CURR_CLASS_CF_VW	A textual description of the code used to group classes that serve a similar purpose.	Examples of valid values: Instruction Functions; Administration Functions; Scholarship Functions

Physical Element Name	Logical Element Name	Format Type	Format Length	Data Set	Table Locations	Element Definition	Examples of Valid Values
CLASS2	Class2 Code	VARCHAR2	5	M_GLDW1	CNVCHARTFD	A code used to group related activities directed towards the accomplishment of a set of common identifiable objectives or purposes. This 'second' class field is used to map legacy function codes to their Indirect Cost Recovery (ICR) excluded classes.	Examples of valid values:1100X = Gen Acad Instr-ICRX
CONTRACTOR	Contractor Indicator	VARCHAR2	1	M_GLDW1	CURR_PROJECT_GRANT_VW PROJECT_GRANT_TBL	A code indicating the Project/Grant direct sponsor has designated the University as a contractor and not a subrecipient. A blank or N means there is no designation as a contractor; a Y means there is one.	Examples of valid values: Y = Yes; N = No; Blank = No
CORPORATE_CUST_ID	Corporate Customer Identification Code	VARCHAR2	15	M_GLDW1	CUSTOMER	A code used to categorize customers under a single customer. For sponsored customers, this code is the billing sponsor code assigned on a project/grant. For general customers, this code is the same as the customer it is assigned to.	Examples of valid values:000125 = 21st Century Technologies Inc; 003170 = VISION Detroit; 889000 = Department of Energy
CORPORATE_CUST_NAME1	Corporate Customer Name One	VARCHAR2	40	M_GLDW1	CUSTOMER	The primary name of a corporate customer.	Examples of valid values:21st Century Technologies Inc; VISION Detroit; Department of Energy
CORPORATE_CUST_SETID	Corporate Customer Set Identification Code	VARCHAR2	5	M_GLDW1	CUSTOMER	A code representing the organizational unit to which a corporate customer is assigned.	Examples of valid values:SPALL; GNALL;
CUST_ADDRESS1	Customer Address 1	VARCHAR2	55	M_GLDW1	CUSTOMER	The first of four address lines which contain various address information for the customer.	Examples of valid values:Accounts Payable; Dept of Ophthalmology; Disbursements Division 0995
CUST_ADDRESS2	Customer Address 2	VARCHAR2	55	M_GLDW1	CUSTOMER	The second of four address lines which contain various address information for the customer.	Examples of valid values:Center for Biotechnology; Attn: Joe Smith PhD; PO 10229635
CUST_ADDRESS3	Customer Address 3	VARCHAR2	55	M_GLDW1	CUSTOMER	The third of four address lines which contain various address information for the customer.	Examples of valid values:Department of Biosciences at NOVUM; ONO-EM H-LAB 13; 9500 Gilman Drive

Physical Element Name	Logical Element Name	Format Type	Format Length	Data Set	Table Locations	Element Definition	Examples of Valid Values
CUST_ADDRESS4	Customer Address 4	VARCHAR2	55	M_GLDW1	CUSTOMER	The fourth of four address lines which contain various address information for the customer.	Examples of valid values:S-141 57 Huddinge; Sternwartstrasse 14;
CUST_CITY	Customer City	VARCHAR2	30	M_GLDW1	CUSTOMER	The name of the village, town or city associated with the address of a customer.	Examples of valid values:BRIGHTON; ANN ARBOR
CUST_COUNTRY	Customer Country Code	VARCHAR2	3	M_GLDW1	CUSTOMER	A code representing the country associated with a customer.	Examples of valid values:USA = United States
CUST_COUNTRY_DESCR	Customer Country Description	VARCHAR2	30	M_GLDW1	CUSTOMER	A textual description of the code representing a country associated with the address of a customer.	Examples of valid values:United States
CUST_ID	Customer Identification Code	VARCHAR2	15	M_GLDW1	AR_ITEM AR_ITEM_ACTIVITY AR_ITEM_ACTIVITY_OWNER AR_ITEM_DST AR_ITEM_OWNER BILL_HDR CUSTOMER	A code uniquely identifying a customer. For sponsored customers, this code is the primary project/grant specified for correspondence with the sponsor.	Examples of valid values:005140; GN03519; N003744
CUST_POSTAL	Customer Postal Code	VARCHAR2	12	M_GLDW1	CUSTOMER	The U.S. ZIP code of the delivery address in the U.S., or the equivalent postal delivery code used in other countries.	Examples of valid values:48104-2316; 481042316
CUST_STATE	Customer State Code	VARCHAR2	6	M_GLDW1	CUSTOMER	A code representing the state, territory, or district associated with the customer address. International addresses will have codes beyond the traditional 50 states in this field.	Examples of valid values:CA = California; IL = Illinois; MI = Michigan
CUST_STATE_DESCR	Customer State Description	VARCHAR2	30	M_GLDW1	CUSTOMER	A textual description of the code representing the state, territory, or district associated with the customer address. International addresses will have descriptions beyond the traditional 50 states in this field.	Examples of valid values:California; Illinois; Michigan
CUST_STATUS	Customer Status Code	VARCHAR2	1	M_GLDW1	CUSTOMER	A code specifying the current status of a customer.	Examples of valid values:A = Active; I = Inactive
CUST_VCHR_NBR	Customer Voucher Number	VARCHAR2	10	M_GLDW1	AR_ITEM BILL_HDR	A system assigned sequential number used to uniquely identify a sponsored customer's invoice sequence. Accounts receivable items not created in Billing will not have this field populated.	Examples of valid values:1; 23;
CUSTOMER_NAME1	Customer Name One	VARCHAR2	40	M_GLDW1	CUSTOMER	The primary name of a customer. For people this is a	Examples of valid values:Department of Energy;

Physical Element Name	Logical Element Name	Format Type	Format Length	Data Set	Table Locations	Element Definition	Examples of Valid Values
						person's preferred name, if available; otherwise, this is a person's primary name. Person name format is Last, First, Middle.	State of Texas; General Motors
CUSTOMER_NAMESHORT	Customer Short Name	VARCHAR2	10	M_GLDW1	CUSTOMER	An abbreviated name by which a customer is known. For people this is a person's preferred name, if available; otherwise, this is a person's primary name. Person name format is Last, First, Middle.	Examples of valid values:DOE = Department of Energy; St of TX = State of Texas; GM = General Motors
CUSTOMER_SETID	Customer Set Identification Code	VARCHAR2	5	M_GLDW1	AR_ITEM AR_ITEM_ACTIVITY AR_ITEM_DST BILL_HDR CUSTOMER	A code representing the organizational unit to which a customer is assigned.	Examples of valid values:GNALL; SPALL
CUSTOMER_TYPE	Customer Type Code	VARCHAR2	1	M_GLDW1	CUSTOMER	A code representing the type of reimbursement from a sponsored customer.	Examples of valid values:0 = Scheduled; 6 = CR - Other; 8 = One-Time
CUSTOMER_TYPE_DESCRSHORT	Customer Type Short Description	VARCHAR2	10	M_GLDW1	CUSTOMER	A textual description of the code representing the type of reimbursement from a sponsored customer.	Examples of valid values:Scheduled; CR - Other; One-Time
DEPARTMENT_REF_NUM	Department Reference Number	VARCHAR2	30	M_GLDW1	AR_ITEM BILL_HDR	An alpha numeric code for general receivables used by a department for reference on an invoice and its accounts receivable item. For sponsored receivables, this is the Sponsor Award Number.	Examples of valid values:873.RFP DEP2; 146420 #113542; 144KF84 H02
DEPOSIT_BUSINESS_UNIT	Deposit Business Unit Code	VARCHAR2	5	M_GLDW1	AR_ITEM_ACTIVITY	A code representing the highest organizational unit involved with a deposit.	Examples of valid values:UMICH = University of Michigan
DEPOSIT_ID	Deposit Identification Code	VARCHAR2	15	M_GLDW1	AR_ITEM_ACTIVITY	A system assigned, sequential number used to define a deposit.	Examples of valid values:13061; 13443; 13803
DEPT_DESCR	Department Name	VARCHAR2	30	M_GLDW1	CURR_FN_DEPT_VW FN_DEPT_TBL	A textual description of the code that identifies each academic or administrative unit that has programmatic, operational and fiscal (including budgetary) responsibility.	Examples of valid values:Physics Department; College of Lit, Science & Arts; UMH Administration
DEPT_EFF_STATUS	Department Effective Status Code	VARCHAR2	1	M_GLDW1	CURR_FN_DEPT_VW FN_DEPT_TBL	A code specifying the current status of a U of M department.	Examples of valid values:A = Active; I = Inactive

Physical Element Name	Logical Element Name	Format Type	Format Length	Data Set	Table Locations	Element Definition	Examples of Valid Values
DEPT_EFFDT	Department Effective Date	DATE		M_GLDW1	FN_DEPT_TBL	The date when the department status becomes effective.	Examples of valid values:01/01/1998
DEPT_GRP	Department Group Code	VARCHAR2	20	M_GLDW1	CURR_FN_DEPT_VW FN_DEPT_TBL	A code used to group U of M departments for reporting purposes. This code is used to group U of M schools, colleges, administrative areas, and vice presidential areas.	Examples of valid values:COLLEGE_OF_LS&A; MEDICAL_SCHOOL; UM_HOSPITAL
DEPT_GRP_CAMPUS	Department Group Campus Code	VARCHAR2	20	M_GLDW1	CURR_FN_DEPT_VW FN_DEPT_TBL	A code used to identify department groups by campus.	Examples of valid values:UM_ANN-ARBOR; UM_DEARBORN; UM_FLINT
DEPT_GRP_CAMPUS_DESCR	Department Group Campus Description	VARCHAR2	30	M_GLDW1	CURR_FN_DEPT_VW FN_DEPT_TBL	A textual description of the code used to identify department groups by campus.	Examples of valid values:Univ of Mich-Ann-Arbor; Univ of Mich-Dearborn; Univ of Mich-Flint
DEPT_GRP_DESCR	Department Group Description	VARCHAR2	30	M_GLDW1	CURR_FN_DEPT_VW FN_DEPT_TBL	A textual description of the code used to group U of M departments for reporting purposes. This description is used to group U of M schools, colleges, administrative areas, and vice presidential areas.	Examples of valid values:College of Lit, Science and Arts; Medical School; U of M Hospital
DEPT_GRP_VP_AREA	Department Group Vice President Area Code	VARCHAR2	20	M_GLDW1	CURR_FN_DEPT_VW FN_DEPT_TBL	A code used to group U of M department groups by President, Vice President, or Chancellor, based on direct reporting lines.	Examples of valid values:PRVST_EXC_VP_ACA_AFF; VP_STUDENT_AFFAIRS; EXC_VP_MED_AFF
DEPT_GRP_VP_AREA_DESCR	Department Group Vice President Area Description	VARCHAR2	30	M_GLDW1	CURR_FN_DEPT_VW FN_DEPT_TBL	A textual description of the code used to group U of M department groups by President, Vice President, or Chancellor, based on direct reporting lines.	Examples of valid values:Provost & Exec VP Academic Aff; VP for Student Affairs; EXEC.VP for Medical Affairs
DEPTID	Department Identification Code	VARCHAR2	10	M_GLDW1	AR_ITEM_ACTIVITY_OWNER AR_ITEM_DST AR_ITEM_OWNER BILL_ACCT_ENTRY CNVCHARTFD CURR_FN_DEPT_VW FN_DEPT_TBL JRNL_LN	A code that identifies each academic or administrative unit that has programmatic, operational and fiscal (including budgetary) responsibility. Note: In the PAY_ESTMT_SUMMARY table, the DEPTID indicates the department responsible for providing funding for a specific job.	Examples of valid values:184500 = Physics Department; 170000 = College of Lit, Science & Arts; 311679 = UMH Administration
DISPUTE_AMOUNT	Dispute Amount	NUMBER	15,2	M_GLDW1	AR_ITEM	The disputed dollar amount of the balance of an accounts receivable item.	Examples of valid values:0.00; 215.78; 98,000.00

Physical Element Name	Logical Element Name	Format Type	Format Length	Data Set	Table Locations	Element Definition	Examples of Valid Values
DISPUTE_DT	Dispute Date	DATE		M_GLDW1	AR_ITEM	The date on which a disputed accounts receivable item was flagged with a dispute status.	Examples of valid values:11/16/2004; 05/16/2005; 06/27/2006
DISPUTE_STATUS	Dispute Status Code	VARCHAR2	3	M_GLDW1	AR_ITEM	A code specifying the current status of a disputed accounts receivable item.	Examples of valid values:B11 = Bankruptcy Chapter 11; PD = Paid; TOP = Treasury Offset Program
DISPUTE_STATUS_DESCR	Dispute Status Description	VARCHAR2	30	M_GLDW1	AR_ITEM	A textual description of the code specifying the current status of a disputed accounts receivable item.	Examples of valid values:Bankruptcy Chapter 11; Paid; Treasury Offset Program
DOLLAR_AMOUNT	Transaction Amount	NUMBER	15,2	M_GLDW1	JRNL_LN	The dollar amount associated with a financial transaction or chart of account balance.	Examples of valid values:-458.00; 763,000.00
DRDA_NBR	Division of Research Development and Administration Number	VARCHAR2	16	M_GLDW1	CURR_PROJECT_GRANT_VW PROJECT_GRANT_TBL	A code that uniquely identifies a record in the Electronic Research Proposal Management (eRPM) system. The first two digits of the code identify the fiscal year in which the record was created. The digits are system generated and sequential representing the number of submissions in the fiscal year. This code is commonly referred to as the Division Of Research Development Administration (DRDA) number, the proposal number or the Proposal Approval Form (PAF) ID. Note:If the DRDA has an '-OR' at the end, the record is a snapshot of the PAF that was originally submitted to the sponsor. The OR stands for 'Original' and these records should not be included when doing summary reports.	Examples of valid values:99-4563 03-00489; 08-PAF00555; 09-PAF00679-PRE; 08-PAF00555-OR
DW_DATA	Data Warehouse Data	VARCHAR2	50	M_GLDW1	GLSTATUS	The names of the data warehouse objects that were loaded. These objects could be a data set, a group of tables or an individual table.	Examples of valid values:Accounts Receivable Tables; General Ledger Tables; Historical Chartfield Tables;
DW_OWNER	Data Warehouse Owner	VARCHAR2	8	M_GLDW1	GLSTATUS	The owner (oracle schema) of the data warehouse objects that were loaded.	Examples of valid values:M_gldw1

Physical Element Name	Logical Element Name	Format Type	Format Length	Data Set	Table Locations	Element Definition	Examples of Valid Values
EMPLID	Employee Identification Code	VARCHAR2	11	M_GLDW1	CURR_FN_DEPT_VW FN_DEPT_TBL PERSONAL_DATA	A system assigned number to uniquely identify a person at U of M. Commonly referred to as UMID.	Examples of valid values:25582542
EVERIFY_SIGNATURE_DT	eVerify Signature Date	DATE		M_GLDW1	CURR_PROJECT_GRANT_VW PROJECT_GRANT_TBL	The date the University of Michigan signed the awarded contract.	Examples of valid values: 01/01/1998
EXTRACT_DT	Extract Date	DATE		M_GLDW1	GLSTATUS	The date and time at which the data was extracted from the source system.	Examples of valid values:07/22/2000
FIN_OPS_CNTCT_CD	Financial Operations Contact Code	VARCHAR2	4	M_GLDW1	CURR_PROJECT_GRANT_VW PROJECT_GRANT_TBL	A code that identifies the FinOps coordinator.	Examples of valid values:00; 37; 64
FIN_OPS_CNTCT_EMPLID	Financial Operations Contact Employee Identification Code	VARCHAR2	11	M_GLDW1	CURR_PROJECT_GRANT_VW PROJECT_GRANT_TBL	A system assigned number to uniquely identify a person at U of M. Commonly referred to as UMID. This identifies the FinOps Coordinator associated with a project/grant.	Examples of valid values:25582542
FIN_OPS_CNTCT_NAME	Financial Operations Contact Name	VARCHAR2	50	M_GLDW1	CURR_PROJECT_GRANT_VW PROJECT_GRANT_TBL	The name of the FinOps Coordinator associated with a project/grant. This is a person's preferred name, if available; otherwise, this is a person's primary name. Person name format is Last, First, Middle.	Examples of valid values:Adamson, Sonya T; Holden, Peter
FISCAL_YEAR	Fiscal Year	NUMBER	4	M_GLDW1	AR_ITEM_DST BILL_ACCT_ENTRY CAL_DETP_TBL JRNL_HEADER	The U of M fiscal year in the format CCYY. The U of M fiscal year runs from July through June. For example, July 1, 2000-June 30, 2001 is Fiscal Year 2001.	Examples of valid values:2000; 2001
FN_CONTRACT_NUM	Financial Contract Number	VARCHAR2	25	M_GLDW1	AR_ITEM BILL_HDR	An alpha numeric value uniquely identifying a financial contract if it is referenced on a sponsored invoice or accounts receivable item.	Examples of valid values:DTNH22-99-H-07019;
FUND_CODE	Fund Code	VARCHAR2	5	M_GLDW1	AR_ITEM_ACTIVITY_OWNER AR_ITEM_DST AR_ITEM_OWNER BILL_ACCT_ENTRY CNVCHARTFD FUND_TBL JRNL_LN	A code used to identify the source of funds and intended use of the funds.	Examples of valid values:10000 = General; 52000 = Auxiliary-Internal Services
FUND_DESCR	Fund Name	VARCHAR2	30	M_GLDW1	CURR_FUND_VW FUND_TBL	A textual description of the code that identifies the source of funds and intended use of the	Examples of valid values:General; Auxiliary-Internal Services

Physical Element Name	Logical Element Name	Format Type	Format Length	Data Set	Table Locations	Element Definition	Examples of Valid Values
						funds.	
FUND_DETAIL_GRP	Fund Detail Group Code	VARCHAR2	20	M_GLDW1	CURR_FUND_VW FUND_TBL	A code used to group funds for reporting purposes. Note: sourced from level 4 of the UM_FUND_GROUP tree.	Examples of valid values: AUX_OTHER = Auxiliary Other; DONOR_POOL = Donor Pool
FUND_DETAIL_GRP_DESCR	Fund Detail Group Description	VARCHAR2	30	M_GLDW1	CURR_FUND_VW FUND_TBL	A textual description of the code used to group funds for reporting purposes. Note: sourced from level 4 of the UM_FUND_GROUP tree.	Examples of valid values: Auxiliary Other; Donor Pool
FUND_EFF_STATUS	Fund Effective Status Code	VARCHAR2	1	M_GLDW1	CURR_FUND_VW FUND_TBL	A code specifying the current status of a fund.	Examples of valid values: A = Active; I = Inactive
FUND_EFFDT	Fund Effective Date	DATE		M_GLDW1	FUND_TBL	The date on which the fund status becomes effective.	Examples of valid values: 07/01/1998
FUND_GRP	Fund Group Code	VARCHAR2	20	M_GLDW1	CURR_FUND_VW FUND_TBL	A code used to group funds for reporting purposes. Note: sourced from the UM_FUND_GROUP tree.	Examples of valid values: AUXILIARY = Auxiliary; PLANT = Plant
FUND_GRP_DESCR	Fund Group Description	VARCHAR2	30	M_GLDW1	CURR_FUND_VW FUND_TBL	A textual description of the code used to group funds for reporting purposes.	Examples of valid values: Auxiliary; Plant
FUND_RSTRCTN_DES	Fund Restriction Description	VARCHAR2	100	M_GLDW1	CURR_FUND_VW	A textual description of the restriction placed on the fund based on Generally Accepted Accounting Principles (GAAP). For example, a value of Restricted would likely be associated with Gift, Sponsored, and donor funded Endowments.	Examples of valid values: Restricted; Unrestricted; Mixed
FUND_SUBGRP_DES	Fund Subgroup Description	VARCHAR2	100	M_GLDW1	CURR_FUND_VW	A textual description representing the reporting level that breaks down a Fund Group to allow Fund reporting at lower levels of detail.	Examples of valid values: Pooled Endowments; Life Annuity; Endowment Specific; Auxiliary-Housing; University Student Loans
FUND_SUBGRP_DTL_DES	Fund Subgroup Detail Description	VARCHAR2	100	M_GLDW1	CURR_FUND_VW	A textual description representing the reporting level that further breaks down "Fund Subgroup Description" into lower levels of detail. Please note that if no further breakdown is necessary or possible for a specific fund, this value will be the same as "Fund Subgroup Description."	Examples of valid values: True Endowment Management Fund; Quasi Endowment Management Fund; Quasi Endowment Restricted
FUND_TYP_DES	Fund Type Description	VARCHAR2	100	M_GLDW1	CURR_FUND_VW	A textual description of the code representing whether the fund	Examples of valid values: Operating; Non-Operating;

Physical Element Name	Logical Element Name	Format Type	Format Length	Data Set	Table Locations	Element Definition	Examples of Valid Values
						is for Operating, Non-Operating, is considered a Management Fund or is Other (Agency).	Management Fund; Other
GROSS_EXTENDED_AMT	Gross Extended Amount	NUMBER	15,2	M_GLDW1	BILL_LINE	The dollar amount representing the product of the Unit Quantity and Unit Amount of an invoice line.	Examples of valid values:- 49,231.85; 713.87; 2,440,000.00
IC_BASIS	Indirect Cost Basis Code	VARCHAR2	4	M_GLDW1	CURR_PROJECT_GRANT_VW PROJECT_GRANT_TBL	A code that identifies groups of accounts eligible for indirect cost recovery.	Examples of valid values:0; 25; 50
IC_RATE_PCT	Indirect Cost Rate Percent	NUMBER	4,2	M_GLDW1	CURR_PROJECT_GRANT_VW PROJECT_GRANT_TBL	The rate at which indirect cost is charged.	Examples of valid values:0.00; 30.00; 52.50
INITIAL_DEPTID	Initial Department Code	VARCHAR2	10	M_GLDW1	CURR_PROJECT_GRANT_VW PROJECT_GRANT_TBL	A code that identifies each initial academic or administrative unit that has programmatic, operational and fiscal (including budgetary) responsibility for the project/grant.	Examples of valid values:184500 = Physics Department; 170000 = College of Lit, Science & Arts
INITIAL_FUND_CODE	Initial Fund Code	VARCHAR2	5	M_GLDW1	CURR_PROJECT_GRANT_VW PROJECT_GRANT_TBL	A code used to identify the initial source of funds and intended use of the funds for the project/grant.	Examples of valid values:10000 = General; 52000 = Auxiliary-Internal Services
INVOICE	Invoice Number	VARCHAR2	22	M_GLDW1	BILL_ACCT_ENTRY BILL_HDR BILL_LINE	A system assigned number used to uniquely identify an invoice.	Examples of valid values:1000000; 1008216; 577571
INVOICE_AMOUNT	Invoice Amount	NUMBER	15,2	M_GLDW1	BILL_HDR	The total dollar amount of an invoice.	Examples of valid values:- 17,457.49; 1,522.08; 21,765.00
INVOICE_FORM_DESCR	Invoice Form Description	VARCHAR2	30	M_GLDW1	BILL_HDR	A textual description of the code that identifies the type of form used for an invoice.	Examples of valid values:No Invoice Will Be Printed; Standard Form 1034; Sponsored Program Standard Inv
INVOICE_FORM_ID	Invoice Form Identification Code	VARCHAR2	10	M_GLDW1	BILL_HDR	A code that identifies the type of form used for an invoice.	Examples of valid values:GNNOPRINT = No Invoice Will Be Printed; SF1034 = Standard Form 1034; SPSTANDARD = Sponsored Program Standard Inv
INVOICE_LINE	Invoice Line	NUMBER	5	M_GLDW1	BILL_LINE	A sequential number used to uniquely identify the sort order of each line of an invoice.	Examples of valid values:1; 5; 10
INVOICE_TYPE	Invoice Type Code	VARCHAR2	3	M_GLDW1	BILL_HDR	A code representing the type of an invoice.	Examples of valid values:REG = Regular
INVOICE_TYPE_DESCRSHORT	Invoice Type Short Description	VARCHAR2	10	M_GLDW1	BILL_HDR	An abbreviated textual description of the code	Examples of valid values:Regular

Physical Element Name	Logical Element Name	Format Type	Format Length	Data Set	Table Locations	Element Definition	Examples of Valid Values
						representing the type of an invoice.	
ISR_REPORT_GRP	Institute of Social Research Report Group Code	VARCHAR2	20	M_GLDW1	CURR_PROJECT_GRANT_VW PROJECT_GRANT_TBL	A code used to group Institute of Social Research project grants for reporting purposes.	Examples of valid values:1000 = Direct Cost of Research; 3100 = Center Administration; 5200 = Central Service
ISR_REPORT_GRP_DESCR	Institute of Social Research Report Group Description	VARCHAR2	30	M_GLDW1	CURR_PROJECT_GRANT_VW PROJECT_GRANT_TBL	A textual description of the code used to group Institute of Social Research project grants for reporting purposes.	Examples of valid values:Direct Cost of Research; Center Administration; Central Service
ISR_REPORT_SUBGRP	Institute of Social Research Report Sub Group Code	VARCHAR2	20	M_GLDW1	CURR_PROJECT_GRANT_VW PROJECT_GRANT_TBL	A code used to further group Institute of Social Research project grants within a report group.	Examples of valid values:1020 = Center Sundries; 3120 = Leadership Funds; 5230 = Human Resources
ISR_REPORT_SUBGRP_DESCR	Institute of Social Research Report Sub Group Description	VARCHAR2	30	M_GLDW1	CURR_PROJECT_GRANT_VW PROJECT_GRANT_TBL	A textual description of the code used further group Institute of Social Research project grants within a report group.	Examples of valid values:Center Sundries; Leadership Funds; Human Resources
ITEM_CLOSED_DT	Item Closed Date	DATE		M_GLDW1	AR_ITEM	The date on which an accounts receivable item was closed.	Examples of valid values:10/31/2004; 11/07/2005; null
JOURNAL_AUTH_EMPLID	Journal Authorizer Employee Identification Code	VARCHAR2	11	M_GLDW1	JRNL_HEADER	A system assigned number used to uniquely identify a person at U of M. Commonly referred to as UMID. This identifies the person responsible for journal entry authorization.	Examples of valid values:25582542
JOURNAL_AUTH_NAME	Journal Authorizer Name	VARCHAR2	50	M_GLDW1	JRNL_HEADER	The name of the person responsible for journal entry authorization. This is a person's preferred name, if available; otherwise, this is a person's primary name. Person name format is Last, First, Middle.	Examples of valid values:ADAMSON, SONYA T; HOLDEN, PETER
JOURNAL_AUTH_PHONE	Journal Authorizer Phone	VARCHAR2	24	M_GLDW1	JRNL_HEADER	The telephone number of the person responsible for journal entry authorization.	Examples of valid values:718/654-3312; 418/123-4567
JOURNAL_DATE	Journal Date	DATE		M_GLDW1	AR_ITEM_DST BILL_ACCT_ENTRY JRNL_HEADER JRNL_LN JRNL_LN_RECON_EXCPTN	The date of the journal transaction.	Examples of valid values:07/12/2000
JOURNAL_DESCR254	Journal Description	VARCHAR2	254	M_GLDW1	JRNL_HEADER	A description of the journal transaction.	Examples of valid values:AP Accruals; Transfer funds to support program

Physical Element Name	Logical Element Name	Format Type	Format Length	Data Set	Table Locations	Element Definition	Examples of Valid Values
JOURNAL_ENTERED_OPRID	Journal Entered Operator Identification	VARCHAR2	30	M_GLDW1	JRNL_HEADER	A code representing the operator identification of the person who entered the journal transaction into the system.	Examples of valid values:DSELL; MPCONAB
JOURNAL_ID	Journal Identification	VARCHAR2	10	M_GLDW1	AR_ITEM_DST BILL_ACCT_ENTRY JRNL_HEADER JRNL_LN JRNL_LN_RECON_EXCPTN	An alpha numeric number identifying a journal transaction.	Examples of valid values:AP00108100 = AP Accruals; 0000104838 = Transfer funds to support program
JOURNAL_LINE	Journal Line	NUMBER	9	M_GLDW1	AR_ITEM_DST BILL_ACCT_ENTRY JRNL_LN JRNL_LN_RECON_EXCPTN	The line number of the detail journal line.	Examples of valid values:3; 11; 20; 1010
JOURNAL_LINE_DESCR	Journal Line Transaction Description	VARCHAR2	30	M_GLDW1	JRNL_LN	A textual description of the journal line.	Examples of valid values:AP Accrual; Balancing Cash; Miscellaneous Supplies
JOURNAL_SOURCE	Journal Source Code	VARCHAR2	3	M_GLDW1	JRNL_HEADER	A user or system assigned code used to identify the source for the Journal Entry. This identifies whether the Journal Entry is from a sub system, a specific department, an allocation, etc.	Examples of valid values:AP = Generated from Accts. Payable; LSA = LSA JE User; IDC = Indirect Cost Allocation
JOURNAL_SOURCE_DESCR	Journal Source Description	VARCHAR2	30	M_GLDW1	JRNL_HEADER	A textual description of the code used to identify the source for the Journal Entry. This identifies whether the Journal Entry is from a sub system, a specific department, an allocation, etc.	Examples of valid values:Generated from Accts. Payable; LSA JE User; Indirect Cost Allocation
JOURNAL_SYSTEM_SOURCE	Journal System Code Source	VARCHAR2	3	M_GLDW1	JRNL_HEADER	A system assigned code used to identify the system source for the Journal Entry.	Examples of valid values:GBI = JrnlGen - Billing; PNL = PS/GL Journal Entry Page; EXT = PS/GL External Journal
JRNL_LN_RECON_ASSGN_UNQNM	Journal Line Reconciliation Assigned To Uniqname	VARCHAR2	30	M_GLDW1	JRNL_LN	The operator identification of the person who is assigned to reconcile the transaction.	Examples of valid values: HROSE; MHASKINS; RJSCHMID
JRNL_LN_RECON_EXCPTN_TYPE_CD	Journal Line Reconciliation Exception Type Code	VARCHAR2	2	M_GLDW1	JRNL_LN_RECON_EXCPTN	A code representing an exception type as to why a transaction could not be systematically auto-reconciled.	Examples of valid values: AF; AN; AP
JRNL_LN_RECON_EXCPTN_TYPE_DESC	Journal Line Reconciliation Exception Type Description	VARCHAR2	30	M_GLDW1	JRNL_LN_RECON_EXCPTN	A textual description of the code representing an exception type as to why a transaction could not be systematically auto-reconciled.	A textual description of the code representing an exception type as to why a transaction could not be systematically auto-reconciled.
JRNL_LN_RECON_FLG	Journal Line Reconciliation Flag	VARCHAR2	1	M_GLDW1	JRNL_LN	A code indicating whether a journal line been reconciled or	Examples of valid values:Y = Yes; N = No

Physical Element Name	Logical Element Name	Format Type	Format Length	Data Set	Table Locations	Element Definition	Examples of Valid Values
						not.	
JRNL_LN_RECON_LAST_UPDAT E_BY	Journal Line Reconciliation Last Update By Operator Identification Code	VARCHAR2	30	M_GLDW1	JRNL_LN	The operator identification of the last person to have reconciled or to have added a note to the journal line.	Examples of valid values: RKLAFKKE; DSELL
JRNL_LN_RECON_LAST_UPDAT E_DT	Journal Line Reconciliation Last Update Date	DATE		M_GLDW1	JRNL_LN	The date on which the journal line reconciliation or not was last update.	Examples of valid values: 01/10/1999
JRNL_LN_RECON_NOTE	Journal Line Reconciliation Note	VARCHAR2	254	M_GLDW1	JRNL_LN	The reconciliation notes related to a journal line.	Examples of valid values: JE'd to Dept. Divisions for sending a medical student to an intentional conference.
JRNL_LN_RECON_RSLTN_RSN_ CD	Journal Line Reconciliation Resolution Reason Code	VARCHAR2	3	M_GLDW1	JRNL_LN	A code representing the reason why a resolution type was chosen, as manually selected by the assigned reconciler.	Examples of valid values: IAP; ICF; IPM
JRNL_LN_RECON_RSLTN_RSN_ DESCR	Journal Line Reconciliation Resolution Reason Description	VARCHAR2	30	M_GLDW1	JRNL_LN	A textual description of the code representing the reason why a resolution type was chosen, as manually selected by the assigned reconciler.	Examples of valid values: Incorrect Approver; Incorrect Chartfields; Incorrect Purchasing Method
JRNL_LN_RECON_RSLTN_TYPE_ CD	Journal Line Reconciliation Resolution Type Code	VARCHAR2	3	M_GLDW1	JRNL_LN	A code representing the resolution type of a transaction, which is manually selected by the assigned reconciler.	Examples of valid values: AP; CA; JE
JRNL_LN_RECON_RSLTN_TYPE_ DESCR	Journal Line Reconciliation Resolution Type Description	VARCHAR2	30	M_GLDW1	JRNL_LN	A textual description of the code representing the resolution type of a transaction, which is manually selected by the assigned reconciler.	Examples of valid values: Additional Pay; Confirmed as Accurate; Journal Entry Required
JRNL_LN_RECON_STATUS_CD	Journal Line Reconciliation Status Code	VARCHAR2	1	M_GLDW1	JRNL_LN	A code representing the reconciliation status of the transaction.	Examples of valid values: 1; 2; 3
JRNL_LN_RECON_STATUS_DES CR	Journal Line Reconciliation Status Description	VARCHAR2	30	M_GLDW1	JRNL_LN	A textual description of the code representing the reconciliation status of the transaction.	Examples of valid values: 1 WIP; 2 New; 3 Pend Unit
JRNL_LN_RECON_UNIT_REV_IN D	Journal Line Reconciliation Unit Review Indicator	VARCHAR2	1	M_GLDW1	JRNL_LN	A code indicating whether the journal has been reviewed by a unit during reconciliation.	Examples of valid values: Y=Yes; N=No
JRNL_LN_REF	Journal Line Reference Number	VARCHAR2	10	M_GLDW1	JRNL_LN	An alpha numeric reference for a journal line assigned by a user.	Examples of valid values: AP; C471896
JRNL_RQSTR_EMPLID	Journal Requestor Employee Identification Code	VARCHAR2	11	M_GLDW1	JRNL_HEADER	A system assigned number used to uniquely identify a person at U of M that requested the journal entry. Commonly	Examples of valid values: 25582542

Physical Element Name	Logical Element Name	Format Type	Format Length	Data Set	Table Locations	Element Definition	Examples of Valid Values
						referred to as UMID.	
JRNL_RQSTR_NAME	Journal Requester Name	VARCHAR2	50	M_GLDW1	JRNL_HEADER	This is a person's preferred name, if available; otherwise, this is a person's primary name. Person name format is Last, First, Middle. This is the name of the person responsible for requesting the journal entry.	Examples of valid values: Adamson, Sonya T; Holden, Peter
JRNL_RQSTR_PHONE	Journal Requester Phone	VARCHAR2	24	M_GLDW1	JRNL_HEADER	The telephone number of the person responsible for requesting the journal entry.	Examples of valid values: 734/555-5555
JRNL_RQSTR_PRMRY_APPT_DEPT_CD	Journal Requester Primary Appointing Department Code	VARCHAR2	10	M_GLDW1	JRNL_HEADER	A code indicating the department which is granting an appointment and may be responsible for commitment of title and tenure. This may or may not be the department responsible for funding the appointment. This is the primary appointing department of the person responsible for requesting a journal entry, at the time the associated journal entry was created.	Examples of valid values: 184500 = Physics Department; 170000 = College of Lit, Science & Arts
LOAD_DT	Load Date	DATE		M_GLDW1	GLSTATUS	The date and time at which the data was loaded into the data warehouse. This data may have been loaded into a single table, a group of tables or an entire dataset, as designated by the information provided in the field DW_DATA.	Examples of valid values: 08/04/2000
M_FED_AWARD_ID_NBR	Federal Award Identifier Number	VARCHAR2	30	M_GLDW1	CURR_PROJECT_GRANT_VW PROJECT_GRANT_TBL	A code representing the Federal Award Identifier Number (FAIN) associated with the project grant which is used to track federal awards from the point of appropriation to the individual project grant.	Examples of valid values: 1AADE1719000000; 00003AADE171900; 0000002AADE1719
MINORITY_SUB	Minority Subcontract Code	VARCHAR2	1	M_GLDW1	CURR_PROJECT_GRANT_VW PROJECT_GRANT_TBL	A code that identifies whether a sponsored project/grant is a minority sub contract.	Examples of valid values: Y = Yes; N = No
MONETARY_AMOUNT	Monetary Amount	NUMBER	15,2	M_GLDW1	AR_ITEM_DST BILL_ACCT_ENTRY	A number representing the dollar amount associated with a specific set of chartfields for a transaction.	Examples of valid values: 750.00; 995.00; 1,432.57

Physical Element Name	Logical Element Name	Format Type	Format Length	Data Set	Table Locations	Element Definition	Examples of Valid Values
NET_EXTENDED_AMT	Net Extended Amount	NUMBER	15,2	M_GLDW1	BILL_LINE	The dollar amount representing the sum of an invoice line's Gross Extended Amount plus the Total Surcharge Amount less the Total Discount Amount.	Examples of valid values:- 443.38; 771.53; 12,052.73
ORDER_NO	Order Number	VARCHAR2	10	M_GLDW1	AR_ITEM BILL_HDR	An additional reference certain invoices and accounts receivable items may have. For credit memos, this field may contain the number of the invoice it is crediting.	Examples of valid values:002-07UM; 05/05 AK; 1001234
OWNER_AR_ITEM_ACT_ENTRY_AMT	Owner Accounts Receivable Item Activity Entry Amount	NUMBER	15,2	M_GLDW1	AR_ITEM_ACTIVITY_OWNER	The dollar amount a chartfield is responsible for on an activity of an accounts receivable item.	Examples of valid values:- 2,920,183.00; 392.40; 1,728,473.00
OWNER_AR_ITEM_BAL_AMT	Owner Accounts Receivable Item Balance Amount	NUMBER	15,2	M_GLDW1	AR_ITEM_OWNER	The dollar amount a chartfield is responsible for on the balance on an accounts receivable item.	Examples of valid values:1,269.80; 0.95; 23,681.13
OWNER_DISPUTE_AMT	Owner Dispute Amount	NUMBER	15,2	M_GLDW1	AR_ITEM_OWNER	The dollar amount a chartfield is responsible for on the disputed dollar amount of an accounts receivable item.	Examples of valid values:9,213.24; 155.50; 98,000.00
OWNER_ORIG_AR_ITEM_AMT	Owner Original Accounts Receivable Item Amount	NUMBER	15,2	M_GLDW1	AR_ITEM_OWNER	The dollar amount a chartfield is responsible for on the original dollar amount of an accounts receivable item.	Examples of valid values:60,393.18; 412.64; 25,175.04
PARENT_PROJ_GRANT	Parent Project/Grant	VARCHAR2	15	M_GLDW1	CURR_PROJECT_GRANT_VW PROJECT_GRANT_TBL	The project/grant number of the parent project/grant.	Examples of valid values:C023493 = Fast neutron cross section; C029988 = Neurotransmitters and calmodul
PAYMENT_ID	Payment Identification Code	VARCHAR2	15	M_GLDW1	AR_ITEM_ACTIVITY	A value used to uniquely identify a payment. This may be a check number or information about a wire payment.	Examples of valid values:38390; CRA0105081; WT10_012604_03
PAYMENT_SEQ_NUM	Payment Sequence Number	NUMBER	6	M_GLDW1	AR_ITEM_ACTIVITY	A system assigned sequential number to uniquely identify the sequence of a payment within a deposit.	Examples of valid values:1; 10; 14
PAYMENT_TYPE	Payment Type Code	VARCHAR2	2	M_GLDW1	CURR_PROJECT_GRANT_VW PROJECT_GRANT_TBL	A code used to indicate the funding arrangement with the sponsor.	Examples of valid values:AD = Advnce Pay; CR = Cost Reimb; FP = Fix Price; LC = LOC; PS = Pay Sched
PERSON_ADDRESS1	Person Address 1	VARCHAR2	55	M_GLDW1	PERSONAL_DATA	The first of four address lines which contain various address information.	Examples of valid values:Accts Pay/Travel Audit

Physical Element Name	Logical Element Name	Format Type	Format Length	Data Set	Table Locations	Element Definition	Examples of Valid Values
PERSON_ADDRESS2	Person Address 2	VARCHAR2	55	M_GLDW1	PERSONAL_DATA	The second of four address lines which contain various address information.	Examples of valid values:3048 Admin Svcs 1432
PERSON_ADDRESS3	Person Address 3	VARCHAR2	55	M_GLDW1	PERSONAL_DATA	The third of four address lines which contain various address information.	Examples of valid values:1009 Greene St.
PERSON_ADDRESS4	Person Address 4	VARCHAR2	55	M_GLDW1	PERSONAL_DATA	The fourth of four address lines which contain various address information.	Examples of valid values:Ann Arbor, MI 48103
PERSON_COUNTRY	Person Country Code	VARCHAR2	3	M_GLDW1	PERSONAL_DATA	A code representing the country associated with a person's address.	Examples of valid values:USA = United States
PERSON_NAME	Person Name	VARCHAR2	50	M_GLDW1	PERSONAL_DATA	The name by which a person is known. This is a person's preferred name, if available; otherwise, this is a person's primary name. Person name format is Last, First, Middle.	Examples of valid values:Adamson, Sonya T; Holden, Peter
PERSON_PHONE	Person Phone	VARCHAR2	24	M_GLDW1	PERSONAL_DATA	The telephone number of a person.	Examples of valid values:7186543312; 4181234567
PERSON_UNIQNAME	Person Uniqname	VARCHAR2	8	M_GLDW1	PERSONAL_DATA	A name which is the computing identity of an entity at the University.	Examples of valid values:Jshmoee
PERSON_ZIP	Person Postal Code	VARCHAR2	10	M_GLDW1	PERSONAL_DATA	The 10 digit zip code of an address.	Examples of valid values:49224; 49286; 1492
PO_REF	Purchase Order Reference Code	VARCHAR2	30	M_GLDW1	AR_ITEM BILL_HDR	A code identifying a purchase order.	Examples of valid values:002-07UM; 049613;
PROGRAM_CODE	Program Code	VARCHAR2	5	M_GLDW1	AR_ITEM_ACTIVITY_OWNER AR_ITEM_DST AR_ITEM_OWNER BILL_ACCT_ENTRY CNVCHARTFD CURR_PROGRAM_VW CURR_PROJECT_GRANT_VW JRNL_LN PROGRAM_TBL PROJECT_GRANT_TBL	A code identifying a group of related activities, cost centers, revenue centers, responsibility centers and academic programs. These activities may occur within a single department or across multiple departments.	Examples of valid values:ADMIS = Admissions; RERET = Recruitment & Retention
PROGRAM_DESCR	Program Name	VARCHAR2	30	M_GLDW1	CURR_PROGRAM_VW PROGRAM_TBL	The name identifying a group of related activities, cost centers, revenue centers, responsibility centers and academic programs.	Examples of valid values:Admissions; Recruitment & Retention
PROGRAM_EFF_STATUS	Program Effective Status Code	VARCHAR2	1	M_GLDW1	CURR_PROGRAM_VW PROGRAM_TBL	A code specifying the current status of a program.	Examples of valid values:A = Active; I = Inactive
PROGRAM_EFFDT	Program Effective Date	DATE		M_GLDW1	CURR_PROGRAM_VW PROGRAM_TBL	The date on which the program status becomes effective.	Examples of valid values:01/01/1998

Physical Element Name	Logical Element Name	Format Type	Format Length	Data Set	Table Locations	Element Definition	Examples of Valid Values
PROJ_GRANT_STATUS	Project/Grant Status Code	VARCHAR2	1	M_GLDW1	CURR_PROJECT_GRANT_VW PROJECT_GRANT_TBL	A code specifying the current status of a project/grant.	Examples of valid values:A = Approved; H = Hardship; K = Capital
PROJ_GRT_ACT_ENDDT	Project Grant Activity End Date	DATE		M_GLDW1	PRJ_GRT_RPDTL	The last date of the period of activity, which the report addresses (e.g., this report is for activity ending June 30, 2002). The ending date is in the format MM/DD/YYYY.	Examples of valid values:04/30/2002
PROJ_GRT_APPR_SUPR_DT	Project Grant Approved by Supervisor Date	DATE		M_GLDW1	PRJ_GRT_RPDTL	The date on which project/grant report was approved by a supervisor. The approval date is in the format MM/DD/YYYY. A value of 12/31/2050 represents an instance of the date not applying to the particular report.	Examples of valid values:04/30/2002
PROJ_GRT_BILLD_AMT	Project Grant Amount Billed	NUMBER	15,2	M_GLDW1	PRJ_GRT_RPDTL	The dollar amount requested from the sponsor for the project/grant.	Examples of valid values:06/25/2584
PROJ_GRT_BILLED_BY	Project/Grant Billed By Code	VARCHAR2	1	M_GLDW1	CURR_PROJECT_GRANT_VW PROJECT_GRANT_TBL	A code representing the billing method if the project/grant is designated as the primary project/grant used in correspondence with the sponsor.	Examples of valid values:B = AR Interface; E = AR Manual Billing; D = PI Department
PROJ_GRT_BUD_PERIOD_END_DT	Project/Grant Budget Period End Date	DATE		M_GLDW1	CURR_PROJECT_GRANT_VW PROJECT_GRANT_TBL	The date on which the project/grant budgeting period ends. The end date is in the format MM/DD/YYYY.	Examples of valid values:04/30/2002
PROJ_GRT_BUD_PERIOD_START_DT	Project/Grant Budget Period Start Date	DATE		M_GLDW1	CURR_PROJECT_GRANT_VW PROJECT_GRANT_TBL	The date on which the project/grant budgeting period begins. The start date is in the format MM/DD/YYYY.	Examples of valid values:04/30/2002
PROJ_GRT_COMPLT_DT	Project Grant Completed Date	DATE		M_GLDW1	PRJ_GRT_RPDTL	The date on which project/grant report was finished. The finish date is in the format MM/DD/YYYY.	Examples of valid values:04/30/2002
PROJ_GRT_DIR_CNTCT_EMPLID	Project/Grant Director Contact Employee Identification Code	VARCHAR2	11	M_GLDW1	CURR_PROJECT_GRANT_VW PROJECT_GRANT_TBL	A system assigned number used to uniquely identify a person at U of M. Commonly referred to as UMID. This identifies the project director associated with a project/grant.	Examples of valid values:25582542
PROJ_GRT_DIR_CNTCT_NAME	Project/Grant Director Contact Name	VARCHAR2	50	M_GLDW1	CURR_PROJECT_GRANT_VW PROJECT_GRANT_TBL	The name of the project director associated with a project/grant. This is a person's preferred name, if available; otherwise,	Examples of valid values:Adamson, Sonya T; Holden, Peter

Physical Element Name	Logical Element Name	Format Type	Format Length	Data Set	Table Locations	Element Definition	Examples of Valid Values
						this is a person's primary name. Person name format is Last, First, Middle.	
PROJ_GRT_EXT_REQST	Project Grant Externally Requested Code	VARCHAR2	2	M_GLDW1	PRJ_GRT_RPDTL	A code identifying the external requestor of a project/grant report.	Examples of valid values:11 = Sponsor; 12 = NIH; 13 = ONR
PROJ_GRT_EXT_REQST_DESCR	Project Grant Externally Requested Description	VARCHAR2	30	M_GLDW1	PRJ_GRT_RPDTL	A textual description of the code identifying the external requestor of a project/grant report.	Examples of valid values:Sponsor; NIH; ONR
PROJ_GRT_EXT_REQST_DESCR SH	Project Grant Externally Requested Short Description	VARCHAR2	10	M_GLDW1	PRJ_GRT_RPDTL	An abbreviated textual description of the code identifying the external requestor of a project/grant report.	Examples of valid values:Sponsor; NIH; ONR
PROJ_GRT_GVN_SUPR_DT	Project Grant Given to Supervisor Date	DATE		M_GLDW1	PRJ_GRT_RPDTL	The date on which the project/grant report was delivered to a supervisor. The delivery date is in the format MM/DD/YYYY. A value of 12/31/2050 represents an instance of the date not applying to the particular report.	Examples of valid values:04/30/2002
PROJ_GRT_RET_DEPT_DT	Project Grant Returned by Department Date	DATE		M_GLDW1	PRJ_GRT_RPDTL	The date on which project/grant report approval was returned by the department. The return date is in the format MM/DD/YYYY. A value of 12/31/2050 represents an instance of the date not applying to the particular report.	Examples of valid values:04/30/2002
PROJ_GRT_RPT_CNTCT_EMPLID	Project Grant Report Contact Employee Identification Code	VARCHAR2	11	M_GLDW1	PRJ_GRT_RPDTL	A system assigned number to uniquely identify a person at U of M. Commonly referred to as UMID. This identifies the Financial Operations coordinator associated with a project/grant report.	Examples of valid values:25582542
PROJ_GRT_RPT_CNTCT_NAME	Project Grant Report Contact Name	VARCHAR2	50	M_GLDW1	PRJ_GRT_RPDTL	The name of the Financial Operations coordinator associated with a project/grant report. This is a person's preferred name, if available; otherwise, this is a person's primary name. Person name format is Last, First, Middle.	Examples of valid values:VANSICKLE,BRYAN S

Physical Element Name	Logical Element Name	Format Type	Format Length	Data Set	Table Locations	Element Definition	Examples of Valid Values
PROJ_GRT_RPT_COMMENT	Project Grant Report Comment	VARCHAR2	2000	M_GLDW1	PRJ_GRT_RPDTL	Comment text associated with a specific project/grant report.	Examples of valid values:Need to follow-up on this one with Biology; We're late on this one
PROJ_GRT_RPT_CONTACT_CD	Project Grant Report Contact Code	VARCHAR2	4	M_GLDW1	PRJ_GRT_RPDTL	A code used to identify the Financial Operations coordinator associated with a project/grant report.	Examples of valid values:S05 = 55656856
PROJ_GRT_RPT_DUE_DT	Project Grant Report Due Date	DATE		M_GLDW1	PRJ_GRT_RPDTL	The date on which a project/grant report is due.	Examples of valid values:04/30/2002
PROJ_GRT_RPT_STAT	Project Grant Report Status Code	VARCHAR2	2	M_GLDW1	PRJ_GRT_RPDTL	A code specifying the exception status of a project/grant report.	Examples of valid values:03 = Reported to Authorization; 02 = Positive Balance; 06 = Intern to complete
PROJ_GRT_RPT_STAT_DESCR	PROJ_GRT_RPT_STAT_DESCR	VARCHAR2	30	M_GLDW1	PRJ_GRT_RPDTL	A textual description of the code specifying the exception status of a project/grant report.	Examples of valid values:Reported to Authorization; Positive Balance; Intern to complete
PROJ_GRT_RPT_STAT_DESCRSH	Project Grant Report Status Short Description	VARCHAR2	10	M_GLDW1	PRJ_GRT_RPDTL	An abbreviated textual description of the code specifying the exception status of a project/grant report.	Examples of valid values:Rptd Auth; Pos Balnce; Intern Cmp
PROJ_GRT_RPT_STRT_DT	Project Grant Report Start Date	DATE		M_GLDW1	PRJ_GRT_RPDTL	The date on which Financial Operations staff began work in the report. The beginning date is in the format MM/DD/YYYY.	Examples of valid values:04/30/2002
PROJ_GRT_RPT_TYPE	Project/Grant Report Type Code	VARCHAR2	3	M_GLDW1	PRJ_GRT_RPDTL PRJ_GRT_RPTS	A code that identifies the type of report needed for a specific project/grant.	Examples of valid values:A21 = A-21; BR = Bdgt-Rev; CCR = CumCostRpt
PROJ_GRT_RPT_TYPE_DESCR	Project Grant Report Type Description	VARCHAR2	30	M_GLDW1	PRJ_GRT_RPDTL PRJ_GRT_RPTS	A textual description of the code that identifies the type of report needed for a specific project/grant.	Examples of valid values:Report A-21; Budget = Revenue; Cumulative Cost Report
PROJ_GRT_RPT_TYPE_DESCRSH	Project Grant Report Type Short Description	VARCHAR2	10	M_GLDW1	PRJ_GRT_RPDTL PRJ_GRT_RPTS	An abbreviated textual description of the code that identifies the type of report needed for a specific project/grant.	Examples of valid values:A21; Bdgt=Rev; CumCostRpt
PROJ_GRT_SNT_DEPT_DT	Project Grant Sent to Department Date	DATE		M_GLDW1	PRJ_GRT_RPDTL	The date on which project/grant report was sent to the department for review and approval. The send date is in the format MM/DD/YYYY. A value of 12/31/2050 represents an instance of the date not applying to the particular report.	Examples of valid values:04/30/2002
PROJECT_GRANT	Project/Grant Code	VARCHAR2	15	M_GLDW1	AR_ITEM_ACTIVITY_OWNER AR_ITEM_DST	A code used to accumulate financial information on a set of	Examples of valid values:C026993; F000101

Physical Element Name	Logical Element Name	Format Type	Format Length	Data Set	Table Locations	Element Definition	Examples of Valid Values
					AR_ITEM_OWNER BILL_ACCT_ENTRY CNVCHARTFD CURR_PROJECT_GRANT_VW JRNL_LN PRJ_GRT_RPDTL PRJ_GRT_RPTS PROJECT_GRANT_TBL	activities over a limited time span. Used for contracts and grants, construction projects and unit-defined projects.	
PROJECT_GRANT_EFF_STATUS	Project/Grant Effective Status Code	VARCHAR2	1	M_GLDW1	CURR_PROJECT_GRANT_VW PROJECT_GRANT_TBL	A code identifying the current status of a project/grant.	Examples of valid values: A = Active; I = Inactive
PROJECT_GRANT_EFFDT	Project/Grant Effective Date	DATE		M_GLDW1	CURR_PROJECT_GRANT_VW PRJ_GRT_RPDTL PRJ_GRT_RPTS PROJECT_GRANT_TBL	The date when the project/grant status becomes effective.	Examples of valid values: 01/01/1998
PROJECT_GRANT_END_DT	Project/Grant End Date	DATE		M_GLDW1	CURR_PROJECT_GRANT_VW PROJECT_GRANT_TBL	The date on which the project/grant ends.	Examples of valid values: 01/01/1999
PROJECT_GRANT_START_DT	Project/Grant Start Date	DATE		M_GLDW1	CURR_PROJECT_GRANT_VW PROJECT_GRANT_TBL	The date on which the project/grant starts.	Examples of valid values: 01/01/1998
PROJECT_GRANT_TITLE	Project/Grant Title	VARCHAR2	75	M_GLDW1	CURR_PROJECT_GRANT_VW PROJECT_GRANT_TBL	The title for a project/grant.	Examples of valid values: Studies Of Human Mutation Rates; Core B - Clarke
PROJECT_GRANT_TYPE	Project/Grant Type Code	VARCHAR2	2	M_GLDW1	CURR_PROJECT_GRANT_VW PROJECT_GRANT_TBL	A code used to indicate the type of a project/grant.	Examples of valid values: GR = Grant; CT = Contract
PYRLT_TRANS_UNALLW_IND	Payroll Transaction Unallow Indicator	VARCHAR2	1	M_GLDW1	CNVCHARTFD	A code indicating whether payroll transactions are unallowed on the associated shortcode. A value of "Yes" indicates that payroll transactions are not allowed on the associated shortcode.	Examples of valid values: Y
RECON_NOTE_LAST_UPDT_BY	Accounts Receivable Reconciliation Note Last Update By Operator Identification Code	VARCHAR2	30	M_GLDW1	AR_ITEM_DST	The operator identification of the last person to add or change a note for a transaction in the eReconciliation process.	Examples of valid values: HROSE; MHASKINS; RJSCHMID
RECON_NOTE_LAST_UPDT_BY	Bill Account Reconciliation Note Last Update By Operator Identification Code	VARCHAR2	30	M_GLDW1	BILL_ACCT_ENTRY	The operator identification of the last person to add or change a note for a transaction in the eReconciliation process.	Examples of valid values: HROSE; MHASKINS; RJSCHMID
RECON_NOTE_LAST_UPDT_BY	Journal Line Reconciliation Note Last Update By Operator	VARCHAR2	30	M_GLDW1	JRNL_LN	The operator identification of the last person to add or change a note for a transaction in the eReconciliation process.	Examples of valid values: HROSE; MHASKINS; RJSCHMID

Physical Element Name	Logical Element Name	Format Type	Format Length	Data Set	Table Locations	Element Definition	Examples of Valid Values
	Identification Code						
RECON_NOTE_LAST_UPDT_DT	Accounts Receivable Reconciliation Note Last Update Date	DATE		M_GLDW1	AR_ITEM_DST	The date on which a note was added or updated for a transaction in the eReconciliation process.	Examples of valid values: 07/01/2001
RECON_NOTE_LAST_UPDT_DT	Bill Account Reconciliation Note Last Update Date	DATE		M_GLDW1	BILL_ACCT_ENTRY	The date on which a note was added or updated for a transaction in the eReconciliation process.	Examples of valid values: 07/01/2001
RECON_NOTE_LAST_UPDT_DT	Journal Line Reconciliation Note Last Update Date	DATE		M_GLDW1	JRNL_LN	The date on which a note was added or updated for a transaction in the eReconciliation process.	Examples of valid values: 07/01/2001
REPORT_FREQ	Report Frequency Code	VARCHAR2	1	M_GLDW1	PRJ_GRT_RPDTL PRJ_GRT_RPTS	A code that identifies the reporting frequency to the granting agency.	Examples of valid values:A = Annual; F = Final; M = Monthly
REPORT_FREQ_DESCR	Report Frequency Description	VARCHAR2	30	M_GLDW1	PRJ_GRT_RPDTL	A textual description of the code that identifies the reporting frequency to the granting agency.	Examples of valid values:Annual; Final; Monthly
REPORT_MONTH	Reporting Month Due Code	VARCHAR2	2	M_GLDW1	PRJ_GRT_RPTS	A code that identifies the month or quarter that the report is due to the granting agency.	Examples of valid values:01 = January; 02 = February; MQ = Qtr - Mar
REPORTING_BUDGET_AMT	Reporting Budget Amount	NUMBER	15,2	M_GLDW1	CURR_PROJECT_GRANT_VW PROJECT_GRANT_TBL	A number representing the dollar amount used for budget reporting. Only used for non-sponsored project grants.	Examples of valid values:0; 1125.00; 5,000,000.00
REVERSAL_CD	Reversal Code	VARCHAR2	1	M_GLDW1	JRNL_HEADER	A code indicating whether the journal is an automatic reversal or will have an automatic reversing entry created and what the date option is for the reversal.	Examples of valid values:B = Beginning of Next Period; D = On Date Specified by User; E = End of Next Period; N = Do Not Generate Reversal; R = Created by Reversal Process
REVERSAL_DATE	Reversal Date	DATE		M_GLDW1	JRNL_HEADER	The date of the reversing entry.	Examples of valid values:01/01/1998
RPT_DAYS_CMPL	Reporting Days to Complete Code	VARCHAR2	3	M_GLDW1	PRJ_GRT_RPTS	A code representing the number of days in which a report must be completed.	Examples of valid values:015; 090; 180
SHORTCODE	ShortCode Number	VARCHAR2	6	M_GLDW1	CNVCHARTFD	A code that represents a unique combination (blank and non-blank) of chartfields; fund, department, class, program, and project/grant.	Examples of valid values:000094 = USDA-6J89B; 012984 = VA Hospital/Med Admin; 035677 = Research Agreement (SAE)
SHORTCODE_DESCR50	ShortCode Description	VARCHAR2	50	M_GLDW1	CNVCHARTFD	A textual description of the code that represents a unique combination (blank and non-	Examples of valid values:USDA-6J89B; VA Hospital/Med Admin; Research

Physical Element Name	Logical Element Name	Format Type	Format Length	Data Set	Table Locations	Element Definition	Examples of Valid Values
						blank) of chartfields; fund, department, class, program, and project/grant.	Agreement (SAE)
SHORTCODE_STATUS	ShortCode Status Code	VARCHAR2	1	M_GLDW1	CNVCHARTFD	A code representing the current disposition of the shortcode.	Examples of valid values:C = Closed; E = Endowment; O = Open; T = Terminated
SHORTCODE_STATUS_DESCRSHORT	ShortCode Status Short Description	VARCHAR2	10	M_GLDW1	CNVCHARTFD	An abbreviated textual description of the code representing the current disposition of the shortcode.	Examples of valid values:Closed; Endowment; Open; Terminated
SINGLE_ADMIN_CNTCT_EMPLID	Single Administrative Contact Employee Identification Code	VARCHAR2	11	M_GLDW1	CURR_PROJECT_GRANT_VW PROJECT_GRANT_TBL	A system assigned number used to uniquely identify a person at U of M. Commonly referred to as UMID. This identifies the single administrative point of contact associated with a project/grant.	Examples of valid values:25582542
SINGLE_ADMIN_CNTCT_NAME	Single Administrative Contact Name	VARCHAR2	50	M_GLDW1	CURR_PROJECT_GRANT_VW PROJECT_GRANT_TBL	The name of the single administrative point of contact associated with the project/grant. This is a person's preferred name, if available; otherwise, this is a person's primary name. Person name format is Last, First, Middle.	Examples of valid values:Adamson, Sonya T; Holden, Peter
SPONSOR	Sponsor Code	VARCHAR2	6	M_GLDW1	CURR_PROJECT_GRANT_VW PROJECT_GRANT_TBL	A code identifying the sponsor or donor of funds of the project/grant.	Examples of valid values:907200 = National Aeronautics and Space Admin.; 023000 = Alumni Association
SPONSOR_AWARD	Sponsor Award Number	VARCHAR2	30	M_GLDW1	CURR_PROJECT_GRANT_VW PROJECT_GRANT_TBL	A number from the sponsor that identifies the award.	Examples of valid values:DMS-9622837
SPONSOR_CLASS_FIN	Sponsor Class Financials Code	VARCHAR2	2	M_GLDW1	CURR_PROJECT_GRANT_VW PROJECT_GRANT_TBL	A textual description of the code that classifies sponsors according to its business for the purposes of financial reporting.	Examples of valid values:US Government; US Foundations; Endowment
SPONSOR_CLASS_FIN_DESCR	Sponsor Class Financials Description	VARCHAR2	30	M_GLDW1	CURR_PROJECT_GRANT_VW PROJECT_GRANT_TBL	A textual description of the code that classifies sponsors according to its business for the purposes of financial reporting.	Examples of valid values:US Government; US Foundations; Endowment
SPONSOR_DESCR100	Sponsor Description	VARCHAR2	100	M_GLDW1	CURR_PROJECT_GRANT_VW PROJECT_GRANT_TBL	A textual description of the code identifying the sponsor, donor or other source of funds of a project/grant.	Examples of valid values:National Aeronautics and Space Admin.; Alumni Association
SPONSOR_DOC_NBR	Sponsor Document Number	VARCHAR2	20	M_GLDW1	CURR_PROJECT_GRANT_VW PROJECT_GRANT_TBL	Letter of Credit (LOC) document number assigned by the sponsor.	Examples of valid values:9321959; 9321986; 9322106

Physical Element Name	Logical Element Name	Format Type	Format Length	Data Set	Table Locations	Element Definition	Examples of Valid Values
SPONSOR_OWN_EQP	Sponsor Owned Equipment Indicator	VARCHAR2	1	M_GLDW1	CURR_PROJECT_GRANT_VW PROJECT_GRANT_TBL	A code indicating that equipment purchased on a Project/Grant is owned by the sponsor. A blank or N means that it is not owned; a Y means that it is.	Examples of valid values: Y = Yes; N = No; Blank = No
SPONSOR_TYPE	Sponsor Type Code	VARCHAR2	1	M_GLDW1	CURR_PROJECT_GRANT_VW PROJECT_GRANT_TBL	A code used to indicate the type of sponsor.	Examples of valid values: F = Federal; I = Internal; N = Non-Federal
SPONSOR_TYPE_DESCR	Sponsor Type Description	VARCHAR2	30	M_GLDW1	CURR_PROJECT_GRANT_VW PROJECT_GRANT_TBL	A textual description of the code used to indicate the type of sponsor.	Examples of valid values: Federal; Internal; Non-Federal
STATISTIC_AMOUNT	Statistics Amount	NUMBER	15,2	M_GLDW1	JRNL_LN	The field used to capture statistical amounts. This is not a monetary amount and will only be populated when the account on the line is a statistical account (i.e. SHR - Shares)	Examples of valid values: 1,500.00; 10,599.20; 95,373.91
TOT_DISCOUNT_AMT	Total Discount Amount	NUMBER	15,2	M_GLDW1	BILL_LINE	The total dollar amount of the discount applied to an invoice line.	Examples of valid values: 01/00/1900
TOT_SURCHARGE_AMT	Total Surcharge Amount	NUMBER	15,2	M_GLDW1	BILL_LINE	The total dollar amount of the surcharge applied to an invoice line.	Examples of valid values: 01/00/1900
TRANS_REF_NUM	Transaction Reference Number	VARCHAR2	8	M_GLDW1	JRNL_HEADER	A number representing a user defined reference to a transaction.	Examples of valid values: 00-653; 3/B1/00; KK000306; RTF-0159