

# Happenings in SRO

## Two More Papers for H2R

We inadvertently left off two H2R papers from last week's e-mail.

*Locating and Contacting Respondents After a 50-year Hiatus in a Longitudinal Study: Results from the Project Talent Pilot Test*, by Celeste Stone, American Institutes for Research; Danielle Battle, American Institutes for Research; Sandy Eyster, American Institutes for Research; Patty Maher, University of Michigan, Survey Research Center; Jenny Bandyk, University of Michigan, Survey Research Center

*Recent Developments of Sampling Hard-to-Reach Populations: An Assessment*, by Sunghee Lee, James Wagner, Steve Heeringa, and Richard Valliant.

## New Project Highlight

### How Housing Matters for Children and Families

Low-income parents face serious constraints when they seek housing, and these constraints may undermine their children's development. In many cases, low-income parents will face trade-offs between dwelling unit quality, neighborhood quality, and school quality. This project has four main aims: 1) to clarify how aspects of dwelling unit quality, neighborhood quality, and local school quality combine to influence the cost of housing accessible to families of below-median income; 2) to assess how qualities of dwelling units, neighborhoods, and schools combine to contribute to key cognitive, socio-emotional, and health outcomes among children; 3) to learn how parents make choices about where to live; and 4) to enhance the study of child development through theoretical and methodological advances in the study of housing and the other social contexts related to it. Working with a scientific team at Northwestern University, the Survey Research Center will conduct three waves of data collection with families in Seattle, Denver, Dallas, and Cleveland. In-person interviews will be completed with 3,450 children, aged 3-8, and a guardian. Half of the households will come from local housing authority lists and half will be generated by random screening in selected neighborhoods located in census blocks with household incomes at or below the area median income. Each interview with a caregiver will take approximately three hours. Forty-five minute interactions with up to two age-eligible children in the household will include Woodcock-Johnson III achievement assessments, completion of a computerized game measuring cognitive processes, observation of caregiver/child interactions using a puzzle. Included in the total household time is collection of anthropometric measures (height, weight, waist and hip measures, blood pressure monitoring) and dried blood spots from caregivers and age-eligible children (Voucher sample only), measurement of room sizes using a laser tape measure, measurement of household noise levels using a noise metering device, completion of a four-day child time diary for one age-eligible child in the household. Follow-up interviews will be completed with these same Wave 1 households in years 2/3 and years 4/5 of the study.

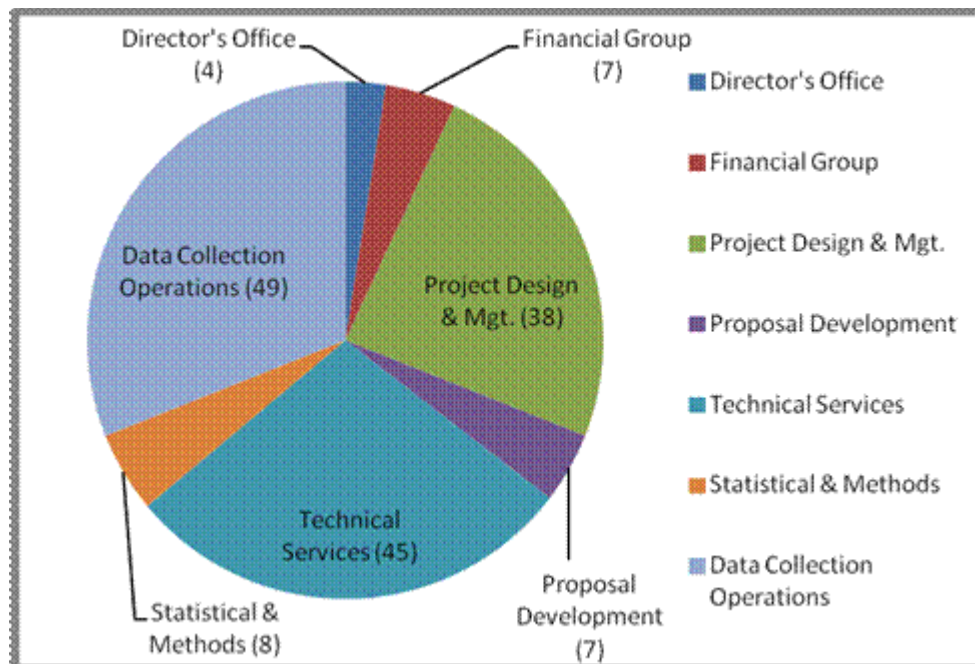
## SRO Staffing

SRO is a fairly large group and we are often welcoming new members and (unfortunately) saying good bye to colleagues. So, we thought you might be interesting in knowing the composition of our staff. Currently, we have **158 regular** staff members in Survey Research Operations. Technical Services and Data Collection Operations groups are the largest in the unit with ~45-50 staff members each. The table below shows our team composition by SRO group.

We also have **606 data collection staff** members: 490 in the field and 116 in the Survey Services Lab.

We continue to bring in new staff, and currently there are **~12-14 open positions** that have been posted or will be in the near future.

Group	Count	% Staff
Director's Office	4	0.03
Financial Group	7	0.04
Project Design & Mgt.	38	0.24
Proposal Development	7	0.04
Technical Services	45	0.28
Statistical & Methods	8	0.05
Data Collection Operations	49	0.31
<b>TOTAL</b>	<b>158</b>	<b>1.00</b>



## Conference Announcements

### **Coming soon!**

International Field Directors & Technologies Conference  
call for program participation will be sent in late October.

**Please start planning now what you and your colleagues will submit for the 2013 program.**

The Westin Providence  
One West Exchange Street  
Providence, Rhode Island 02903  
May 19-22, 2013  
[www.ifdtc.org](http://www.ifdtc.org)

## **The 5th Conference of the European Survey Research Association (ESRA) Ljubljana, Slovenia 15-19 July 2013**

### ----- CALL FOR PAPER PROPOSALS -----

To be considered for inclusion in the scientific program of ESRA 2013, please submit an abstract of your paper containing no more than 100 words via the ESRA website:

<http://www.europeansurveyresearch.org/>

To submit a presentation, sign up or log in to the ESRA website. After logging in to your account, click "Submit paper" and follow the instructions. For ESRA 2013, individuals may submit a maximum of two papers on which they are either the first author or a co-author.

The closing date for submission of paper proposals is 13 January 2013.

Paper proposals are invited in any area of survey methodology, or in substantive applications of survey research. We particularly welcome submissions in the following areas:

- \* Sampling and sample design
  - \* Web surveys
- \* Unit Nonresponse and attrition
  - \* Item nonresponse
- \* Weighting and imputation
- \* Question testing and piloting
  - \* Survey mode
  - \* Data linkage
- \* Collection and analysis of biological data
  - \* Measurement error
  - \* Interviewer effects
- \* Election polling and public opinion
  - \* Survey analysis techniques
- \* Methods for cross-national data collection and analysis

- \* Paradata and fieldwork
- \* Longitudinal surveys
- \* Data archiving
- \* Substantive applications

The ESRA prize for the best paper submitted by an early-career researcher

Researchers within five years of the completion of their doctorate, or within five years of starting a career in survey research, will be eligible to enter their paper for the ESRA Early-Career Researcher prize. The winning paper will be awarded a prize of 500 Euros. More information about the Early-Career Researcher award will be announced on the conference website in due course.

Prof Eldad Davidov, Chair of the Conference Committee  
Prof Bart Meuleman, Vice Chair of the Conference Committee  
Prof Anuška Ferligoj, Ms. Neli Dimc, Local Conference Committee

--  
University of Zurich  
Prof. Dr. Eldad Davidov  
Institute of Sociology  
Andreasstrasse 15  
CH-8050 Zurich  
Switzerland

<http://www.suz.uzh.ch/davidov>  
[davidov@soziologie.uzh.ch](mailto:davidov@soziologie.uzh.ch)

=====  
European Survey Research Association  
[www.europeansurveyresearch.org](http://www.europeansurveyresearch.org)