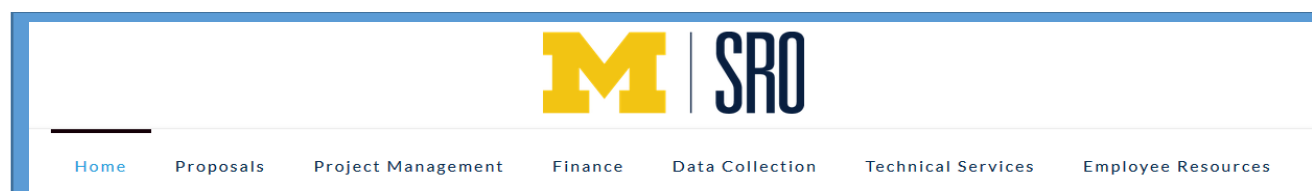


Happening in SRO

You can find this "Happening in SRO" and all similar newsletters on the new SRO Intranet Home Page, located at: <http://isr-wp.isr.umich.edu/srointranet/> under Recent News.



Hello SRO~

As we move from the summer into the fall season, the Admin team has been working on our year-end closing activities and projections for next year's operating budget. As a reminder, our fiscal year (FY) runs from July 1 through June 30th.

Below you will find some key outcomes on the past year's finances and a view into the upcoming year, too. In a few weeks, we will be posting a more comprehensive summary on our home page. So keep an eye out for this End of Year Report (FY16) under the "About SRO" section.

FY16 Report will show up here by the end of September!

About SRO

Acronym List

All Staff Meetings

End of Year Report (FY15)

Organization Charts

Perry Building Map

Phone List

Staff Photo Program

FY16 Financials: The Bottom Line – SRO Rocked It!

This past year, we projected that we would generate work products totaling ~\$33.5M in sponsored project activities. This includes all our interviewers and regular SRO staff functions and the associated non-salary costs that are part of these projects. You will see that we were able to complete more sponsored work than anticipated at the start of the year by more than \$2.7M (total – including nearly \$800,000 more than expected in indirect cost recovery). This represents a 31% increase over FY15!

Well done SRO!

Direct/Indirect Analysis	FY16	FY16	Variance
Direct	Budget	Actuals	
Total Salary	15,540,284	16,159,700	619,416
Total Non-Salary	8,658,161	9,953,622	1,295,461
Total Direct	24,198,445	26,113,322	1,914,877
Indirect	9,370,741	10,162,839	792,097
Total	33,569,187	36,276,161	2,706,974

FY17 Financials: The Bottom Line – SRO is in Very Good Shape!

Our current FY17 budget (July 2016 - June 2017), shows us growing by ~\$2.0M in sponsored project activities, or about 6% over last year – to a total of ~\$38.4M (see table below).

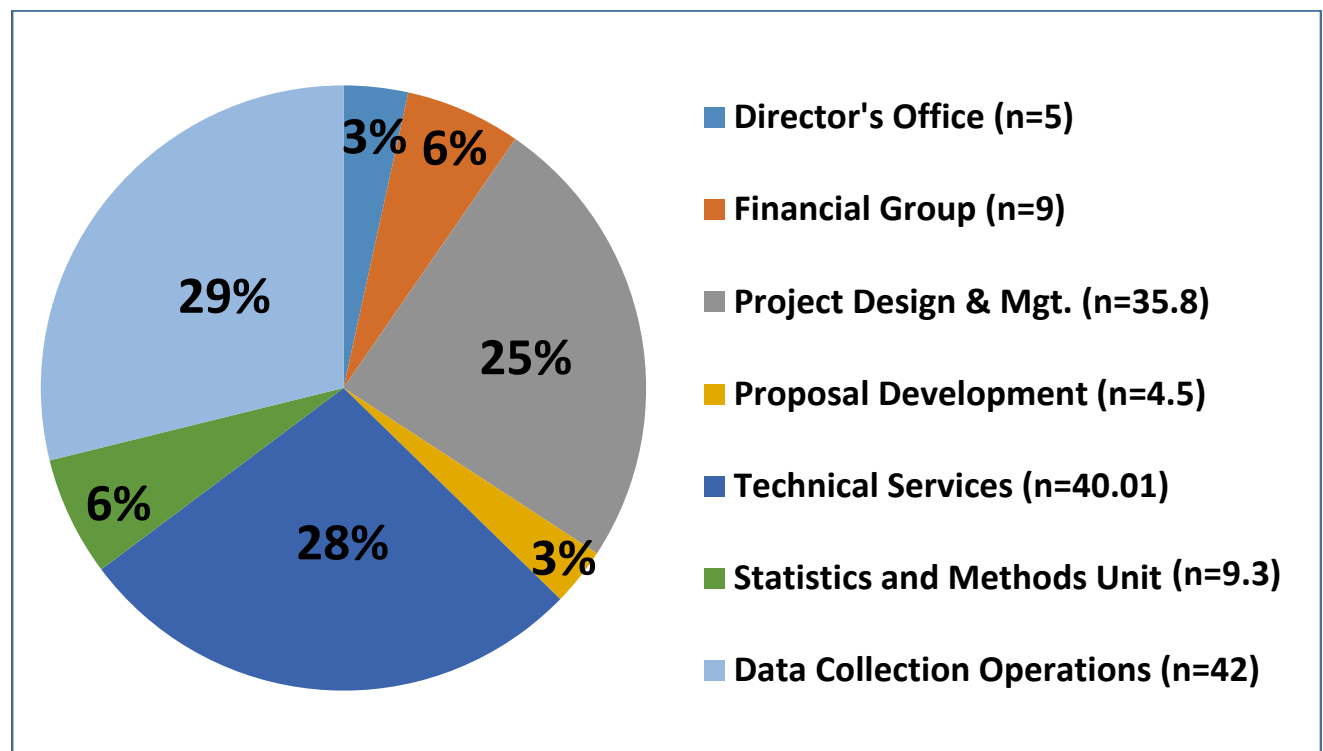
	FY17
	Budget
Direct	
Total Salary	\$18,399,657
Total Non-Salary	\$9,684,226
Total Direct	\$28,083,883
Indirect	\$10,309,113
Total	\$38,392,996

This is very good news for us and the entire Survey Research Center. Most of the growth this year comes from our data collection resources (i.e., interviewer and team leader activities). Though we know our SRO regular staff resources are also stretched to our limits. So, we will continue our plans for hiring. See details below on our staffing.

SRO Staff and Hiring Plans: The Bottom Line – SRO is Growing!

You have probably noticed several announcements over the past weeks about new staff hired into SRO. Currently, we have **145.6 FTEs** (full time equivalents) staff in our unit. The total number of individuals is 147, but some staff work a reduced fraction (< 100%). Our staff count is up by about 5 FTEs in the past two months. The chart below shows the staff count (FTE) and percentage by sub-team in SRO.

We will continue or renew our recruiting effort in DCO, PDG, PDMG and TSG. We are targeting our overall staffing for SRO at approximately 150-153 FTEs.



Upcoming Projects: The Bottom Line – More Projects Starting this Fall...

Later this fall, Stephanie Chardoul will send out a summary of projects that have been recently funded and will be coming into active pre-production this year. So we will continue with a very busy fall and winter season in SRO!

I hope you enjoy the upcoming long weekend, Labor Day, as we mark the transition into fall.

Best Regards, Patty



Security at SRO

We all enjoy the feeling of security afforded us by working in the secure environment here at SRO. However that feeling of security has been disrupted by a recent rash of thefts of small easy to conceal property and money from individual desks within offices and carrels. Please take all precautions to ensure that your valuables, spare change and other items are placed in a locked desk, file cabinet or closet. If you do not have a key for your desk or file cabinet please contact Nancy Bylica to get one. Also, consider taking steps to ensure that equipment such as laptops, cell phones and their power cords are not left unattended. We hope this was an isolated incident but recommend everyone take the necessary steps to secure their property to prevent a repeat of these unfortunate events.

Tips & Tricks (Kelly Chatain)

Creating Accessible Presentations and Websites

Part of creating an interesting and effective PowerPoint presentation or website is making sure it's accessible to everyone. Section 508 of the Rehabilitation Act of 1973 requires all federal agencies to give disabled employees and members of the public access to information that is comparable to the access available to others. And it's the right thing to do!

[Microsoft has a good overview](#) of how to ensure your PowerPoint presentations are accessible.

The [University of Michigan Web Access Group maintains a site](#) that provides guidelines, best practices, and other resources for designing accessible websites.

UM Holiday Calendar and SRO Closure Days

We are scheduling fewer SRO closure days in 2016, due to the way the official U-M holiday schedule falls this year. See the scheduled holidays, season days and closure day listed below for the remainder of 2016. Note that the SRO closure day is optional. Please contact your supervisor to confirm your plan for working or taking time off. We will update our SRO website with these dates shortly. The full list of U-M observed holidays is on the main gateway site, too.

September						
Sun	Mon	Tue	Wed	Thu	Fri	Sat
				1	2	3
4	5	6	7	8	9	10
11	12	13	14	15	16	17
18	19	20	21	22	23	24
25	26	27	28	29	30	
						2016

November						
Sun	Mon	Tue	Wed	Thu	Fri	Sat
		1	2	3	4	5
6	7	8	9	10	11	12
13	14	15	16	17	18	19
20	21	22	23	24	25	26
27	28	29	30			
						2016

December						
Sun	Mon	Tue	Wed	Thu	Fri	Sat
				1	2	3
4	5	6	7	8	9	10
11	12	13	14	15	16	17
18	19	20	21	22	23	24
25	26	27	28	29	30	31
						2016

UM Holidays:

Labor Day, September 5
 Thanksgiving, November 24 & 25
 Christmas, December 26

Season Days:

December 27-30

2016 SRO Closure Day:

Wednesday, November 23

Note:

Monday, January 2, 2017: New Year's Day (observed)
 SRO Re-opens, Tuesday, January 3